

喷涂应用技术手册

(技术/采购 专用)

2017版

适用于：二片罐/三片罐内全喷、焊缝补涂、盖子切线喷涂、钢壳内喷涂、钢桶内外喷涂、轮胎胎面/胎侧/端面、内壁喷涂、机车车架/车厢喷涂、铝型材/建材喷涂、建筑喷涂、家具喷涂等行业。

www.toming.net

提供以下服务:

- 一、喷涂技术咨询和支持
- 二、成套喷涂系统或单套设备
- 三、部件库存或为贵司建立零库存
- 四、设备维修/保养, 精修泵、枪等
- 五、精密模具、精密零部件加工
- 六、免费的备用泵, 备用枪等

需要更多支持请联系: www.toming.net



切里实业 (上海) 有限公司
Cherry Industrial (Shanghai) Co., Ltd

宝山区水产路 2399 号 802 室(泰富商业广场),
PC:201901

TEL: 021-6676 3512, 6676 3513,

FAX:021-6676 3519



QQ 1 : 1454 9901 34

QQ 2 : 7099 4804 1

QQ 3 : 2378 5876 0

目录（第几页）：

- 2、 服务范围
- 4、 公司介绍
- 5-6、 维修服务
- 7-11、 产品服务
- 12、 泵操作规范
- 13-15、 MP-II 泵
- 16-18、 25B 泵
- 19-22、 CP 泵
- 23-24、 PermoFlo 830 泵
- 25、 A7A喷枪
- 26、 A9A喷枪
- 27、 A10A喷枪
- 28、 A16A喷枪
- 29、 A20A喷枪
- 30、 MEG喷枪
- 32-33、 Nordson组件（过滤网/调压阀等）
- 34、 喷嘴/顶针
- 35、 控制器/加热器
- 36、 系统配置/应用/列举
- 37-39、 GRACO产品应用
- 40、 台湾/韩国 产品
- 41-56、 计量单位换算表
- 46-47、 UNI(优恩爱)产品
- 48、 过滤器/调压阀
- 49、 涂料加热器
- 50、 涂料加热应用的优点
- 51-52、 高压柱塞泵
- 53、 高压涂料管
- 54、 SENCON产品应用
- 55、 胶针/模具
- 56、 齿轮泵/定量输送
- 57、 海霸(HIBAR)精密计量泵
- 58、 代购服务/设备部件

公 司 简 介

- 切里实业(上海)有限公司,是由2003年成立的上海拓闽工贸有限公司上发展起来的,是一家专业致力于高粘度和特殊流体、油脂输送/喷涂,三(或双)组份油漆喷涂,氟碳粉末等静电喷涂设备等,在设计、改造等,为客户提高效率、降低成本等方面有实践经验,并为客户提供相关咨询、设计、安装、调试、培训等技术支持和服务。
- 广泛成功应用二片罐/三片罐内全喷、焊缝补涂、盖子切线喷涂、钢壳内喷涂、钢桶内外喷涂、轮胎胎面/胎侧/端面、内壁喷涂、机车车架/车厢喷涂、铝型材/建材喷涂、建筑喷涂、家具喷涂等行业和领域。
- 相配套的产品有固瑞克(Graco),诺信(Nordson)优恩爱(UNI),喷雾系统(Spraying Systems),克姆林(Kremlin),威华(WIWA),Befrag, Belvac,海霸(Hibar),兰氏(Randburg),Sealfilter, EFD点胶机, Sencon, CIP, CMB, Cyklop Strapper, Preferred, Ragsdale, Light tester parts, (Reynolds & Randolph), Randolph Rutherford, Signode, Standun, Minster, Goldco, End Line tooling, Strappex, Stolle,.....
- Eaton(伊顿)Synflex-hose&tubing高压金属软管,圣戈班胶管;热熔胶管等系列管。意大利高压软管;同时提供各种相关管接头和提供扣管服务。提供进口部件的代购服务以及相应系统和设备的更新改造,制造服务等。
- 公司一直围绕“为客户提供最佳方案、创造最高价值”的经营宗旨,并代客户收集相关资料/产品。为客户提供各种需求服务。欢迎贵司来电来函咨询,望在您的关照下,为贵司提供良好的优质服务,谢谢!

维修服务:

◆泵,系列维修的核心技术

诺信 (Nordson) 系列MP, CP, 25B, DR, PermoFlo815 / 830,
固瑞克 (Graco) 系列隔膜泵, 气动泵, 柱塞泵, 输送泵, 电动泵,

◆喷枪,系列维修的核心技术

诺信 (Nordson) 系列A7A,A9A,A10A,A16A,A20A,MEG-I,MEG-II,
固瑞克 (Graco) 系列空气喷枪, 自动喷枪, 高压喷枪, 静电喷枪,

◆阀,系列维修的核心技术

各类的气动阀, 液压阀, 调压阀, 背压阀, 回流阀, 循环阀,

◆自动化设备维修的核心技术主要有以下几个方面:

一、数控系统维修

1. SIEMENS 840C.810D.840D.802DSL.840DSL数控系统维修, OP面板, PCU50,触摸屏,手轮840C系统, CCU, NCU,驱动器, PLC ,电机
2. FANUC 0, 0i, 16i, 18i, 21i, 31i系列数控系统维修 HMI,主控板, β 伺服放大器, α 伺服放大器, 伺服电源,电机,
3. Rexroth 力士乐INDRAMAT,INDRDRIVE数控系统维修 INDRAMAT伺服驱动器 ,HVE电源, DKC系列驱动器,HCS系列驱动器,CSB控制卡,Rexroth 电机

二、电气传动设备维修

1. SEW MOVIDRIVE系列,MOVIFIT系列电气传动设备维修 SEW MOVIDRIVE系列驱动器, SEW E-BOX 驱动器,控制器,SEW 电机
2. SIEMENS 440系列, 6SE70系列,6RA70系列, S120系列电气传动维修 SIEMENS 440系列,S120系列,6SE70系列驱动器,6RA70系列直流调速,西门子ABB大功率变频器
3. ABB ACS550, ACS600, ACS800电气传动维修 ABB ACS550,ACS800 变频器维修,ABB软启动维修,ABB 驱动模块

需要更多支持请联系: 021-6676 3512, 6676 3513, www.toming.net

三、测量检测设备维修

1. 光栅维修

SICK施克的 PLS/ LSI系列，MSL系列，C2000/M2000系列，C4000系列。
SIEMENS西门子的SIGUARD系列，SIMATIC FS200 FS400系列。
Honeywell霍尼韦尔的FF-SG系列，FF-SB系列。

2. 光栅尺维修

德国海德汉HEIDENHAIN的LC 100系列，LF系列，LS 600系列, LB系列光栅尺的读数头维修，光尺的清洁与维护。

四、高压发生器维修

1. 美国热电（Thermo）ARL8400、ARL8600、ARL 9400、ARL 9800系列 X荧

光光谱仪的X射线高压发生器维修

2. 荷兰帕纳科（PANalytical），原飞利浦分析仪器（Philips Analytical）Venus200、Axios帕纳科波长色散X射线荧光光谱仪的高压发生器维修

3. 瑞士百超（Bystronic）高压发生器HPC 520, 高频激励电源MFM235维修

4. 德国通快（TRUMRF）公司的固体激光切割机TruLaser3030 fiber维修

五、拧紧系统维修，电磁阀等阀维修

阿特拉斯拧紧驱动器维修, 力士乐拧紧驱动器维修, 力士乐换向阀维修
MOOG比例阀维修

六、各类喷涂设备系统及喷枪控制器，控制板，驱动器等维修

需要更多支持请联系：021-6676 3512, 6676 3513, www.toming.net

产品服务:

提供以下原始设备制造商部件:

Belvac parts

CIP parts

CMB necker parts

Cyklop Strapper

Light tester parts (Reynolds & Randolph)

Preferred liner parts

Ragsdale parts

Randolph parts

Rutherford parts

Signode

Standun parts

Stolle parts

Strappex parts

Minster parts

Goldco

End Line tooling

.....

同时提供以下公司相关产品及备品备件:

Belvac parts, CIP parts, CMB necker parts, Cyklop Strapper, Light tester parts (Reynolds & Randolph), Preferred liner parts, Ragsdale parts, Randolph parts, Rutherford parts, Signode, Standun parts, Stolle parts, Strappex parts, Minster parts, End Line tooling, 3M Abrasives and Diamond Sheets, Goldco, AEG, Ace Controls, Ace pumps, Advanced Automation Cylinders, Alkon Brass Fittings, Aeroquip hoses, Allen Bradley, Ameridrive, Anderson & Vreeland, Aquafine UV water sterilization parts, Apollo valves, Aquamatic Valve, Aro Pneumatics, Arrow filters, Asco valves, Ashcroft gauges, Ashworth belt, Atkomatic, Atlas Copco, Atlas Cylinders, Autotech Controls, Baltimore Air Coil, Baldor motors, Banner controls, Barber-Colman thermocouples, Barco, Barcode reading instruments, Barksdale, Becker pumps and filters, Beckett pumps, Beko Bekomat, Bel-Ray, Bimba cylinders, Blackmer Pumps, BloApCo scrap system, Bosch pumps, Boston gear, Bray Valves, Brushlon, 3M, Browning, Brown & Sharpe measuring equip, Brown & Sharpe Pumps, Burks Pumps, Bussman fuses, Caterpillar Generators & Equipment, Centric clutches, Chicago Rawhide, Chromalox Heaters, Circle Seal Controls, Cleveland Gearboxes, Clippard Valves, Compound liner nozzles, ControlAir Inc, Cone Drive Gear Reducers, Control Techniques, Control Technology Corp, Cooper Compressor, Cuno, Cornell pumps, Crane, John Seals, Custom Control Sensors, inc., Cutler-Hammer, Danfoss Drives, Danly springs, Data Industrial Corp, Data Instruments (Honeywell), Dayco belts, Dayco hydraulic, Delroyd gear reducers, Deming pumps, Deublin rotary unions, Dezurik, Diamond grinding wheels, Diamond chain, Domnick Hunter,

需要更多支持请联系: 021-6676 3512, 6676 3513, www.toming.net

同时提供以下公司相关产品及备品备件：

Dowty pumps , Dura valves , Durco Pumps, Dwyer gauges, Eagle belt, Eagle controls, Eaton Airflex Products, Eaton drives, Ebco (Now called Oasis), Eberhard, Eclipse, Endine air bag, Enerpac, Eurotherm controllers, Ever-tite couplings, Fabco air cylinders, Fairey Arlon-Filters, Falk couplings, Falk Gearboxes, Farr Filters, Federal Gauge, Fenner belts, Festo Air Cylinders, Finishing & polishing stones, Firestone air bags, Flygt Switches and Pumps, Flowserve, Gardner Denver, Garlock Seals, Gast, Gates Belts, Gates Hoses, Gemco resolvers, GE items, Gems sensors & switches, Go Switch, Goodyear Air Bags, Goulds pumps, Gravure rolls, Grinding wheels, Grove gear box, Grundfos pumps, Habasit belt, Hannay Reels, Haskel pumps, Haldex-Barnes Pumps, Hedland flow meters, Heidemhain, Hoffman, Honeywell temperature controller , Hoistlift Forklift Parts, Honeywell micro switches, Horton Brakes & Clutches, Hub City reducers, Hydac Pressure Switch, Hyde Park sensors, Hydroline cylinders, Hydro-Line cylinders, Humphrey valves, Indramat, IDEC controls, IEC contactors, IFM, Ingersoll Dresser pumps, Ingersoll Rand, Itipack spares, International Power (Power supplies), ITT Engineered Valves, ITT Marlow Pumps, ITT Neo Dyne Pressure Switches, Intralox, Johnson Controls, Jergens, Kason, Kaydon filters, Keyence, Klockner Moeller, KSB Pumps, Landis & Gyr (now part of Siemens), Lantech, Lee Controls, Lee jets and filters, Lee springs, Leeson Motors, Lempcos sleeves and bushings, Lempcos springs, Lightnin mixer, Lincoln lube, Linkbelt, Little Fuse, Little Giant Pumps,

需要更多支持请联系：021-6676 3512, 6676 3513, www.toming.net

同时提供以下公司相关产品及备品备件:

LMI water treatment parts, Lovejoy, Lubes and oils, Lubricator rolls, Lubriquip, Lutz Pumps, Magnaflux die penetrant, Magnetek, MAC valves, Manheim belt, Mann Filters, Marsh Gauges, Maxon Products, McGill Cam Followers, McLean-Midwest Air Conditioners, Measuring gages(calipers, etc), Mercoid Pressure Switches, Mead Limit Switches, Micro Switch (Div. Of Honeywell), Micro Switch, Milton Roy Pumps, Mitutoyo, Minnesota seals & orings, Miratone fire extinguishing systems, Modernair, Monnier Regulators, Morse gearbox, Mosier Cylinders (owned by Norgren), Mueller Steam Valves, Neptune Flow Meters, National seals, New York Blower, Nexen Clutch, Nolu, Norgren air filters & air cylinders, Noshok, Norton grinding wheels, Nupro, Nuttall gearmotors, Numatics, Oasis Drinking Fountain Company, Oil Mop, Oilite bushings, Omron Sensors, Orion (Thermo Electron), Ortling clutches & brakes, Parker cylinders, Parker Filters, Parker fluid connections, Parker hydraulics, Parker seals & orings, Parker Pumps, Peerless pump, Pepperl & Fuchs, Peter Paul Valves, Power One power supplies, PHD cylinders, Piatt, Gordon Burners, Potter & Brumfield Relays, Powers Process Controls, Price pumps, pre-spin rings, Palsa Feeder Pumps, Quincy Air Compressors, Racine pumps, Reuland Motors, Red Lion Controls Cylinders & pumps, Red Lion controls, Reliance, Rexnord belt & chain, Rexroth, Roper Pumps, Ross valves, Saftronics, Sandpiper Pumps, Sankyo Gearbox, Schrader Bellows, Schroeder Filters, Sealmaster, Sencon sensors, Serfilco pumps, SEW Eurodrive, Shamban seals, Sheffer cylinders, Sick Photo Eye's And sensors, Siemens, Siemens Drives, Simplex Hydraulic Jack, Signet, Sioux Pneumatic Tools, Skinner valves,

需要更多支持请联系: 021-6676 3512, 6676 3513, www.toming.net

同时提供以下公司相关产品及备品备件:

SKK gearmotors and reducers, SMC Cylinders/Valves, Snap-Tite Air valves, Snap-Tite quick disc and manual valves, Spencer vortex blower, Square D, Sola, Sta-Rite pumps, Starret, Stauff Filters, Stearns Brakes, Sullair vacuum, Sun Hydraulics, Sunflo or Sundstrand Pumps, Swagelock, Sylvania, Synflex hoses, Taco Pumps, Telemecanique, Tecumseh, Temperature strips, Textron - Cone Drive, Thermal Dynamics Corp., Torrington bearings, Tol-O-Matic, Tom Thumb cylinders, Topworx, Inc, Torit Filters (Torit/Donaldson), Toshiba Motors, Trabon lube systems, Trantorque bushing, Trig-O-matic clutches, Tritronics, Tyco Electronics, Turck sensors, U.S Motors, Universal flow monitors, Ultra Violet Products Company, Uticor (Autotech), Velcon filter elements, Versa valves, Vickers valves, Videojet tritronics, Visolux/Sensor Tech, Vlier, Viking Pump, Wanner/Hydra-Cell pumps, Waterman hydraulics, Waterman valves, Watlow Controller, Watts Fluid Air, Weatherhead hoses, Webster Pumps, Werner Pump, Western Filter, Wika Gauges, Whitman Pressure Switch, Wilden pumps, Wilkerson filters, regulators, Worthington pumps, Zinga Filters, Zeromax Gear Boxes, Zurn clutches (owned by Boston Gear)

.....

需要更多支持请联系: 021-6676 3512, 6676 3513, www.toming.net

泵操作规范要点： 适用NORDON和GRACO.....

一：每日开始操作 涂料泵：

- 1, 将虹吸管放入涂料中, 或在给予涂料进料口处压力.
- 2, 打开空气关闭阀和慢慢调整空气调压器直到泵开始慢慢工作.
- 3, 允许喷涂材料从排水阀内流动, 关掉排水阀.
- 4, 调整泵的空气调整器直到达到所要求的压力, 调整循环阀直到泵开始以每分钟8-10冲程开始工作.
- 5, 如果需要, 打开加热器. 开始工作10-15分钟, 直到加热器的表上显示可以操作的温度 2 °C (5 F), 调整循环阀直到可以显示所要求的流量.
- 6, 开始喷涂.

二：每日工作完毕要求所作的工作：

- 1, 如果工作时使用加热器, 请在关闭泵之前关闭加热器10-15分钟. 以避免涂料残留在加热器中.
- 2, 将泵的压力减少到0.
- 3, 通过触发喷枪或打开排水阀来使卸除系统的压力.
- 4, 继续做每日维修保养的过程.

三：每日的维修保养：

在操作以下的维修保养过程, 请将系统压力卸除.

- 1, 每日必须清洁高压液体过滤器的过滤网, 安装上新的过滤网将旧的过滤网也同时放在溶剂中清洗.
- 2, 检查MP泵内溶剂腔体内的溶剂液位水平, 当溶剂液位水平(从腔体的顶端开始的32mm(1 ¼ IN), 或者溶剂已经受到污染. 请继续加入新的溶剂在MP泵的溶剂腔体内, (从顶端开始的12.7mm). 用T溶剂适用在水性涂料, 用K溶剂适用在油性涂料.
- 3, 检查空气过滤器, 并可以将空气过滤器拆卸下来, 去除多余水份等物质.
- 4, 检查空气润滑油装置, 润滑油的液压水平, 保证这个装置里面有润滑油同时还必须要求在泵工作

10-15冲程滴下一滴润滑油.

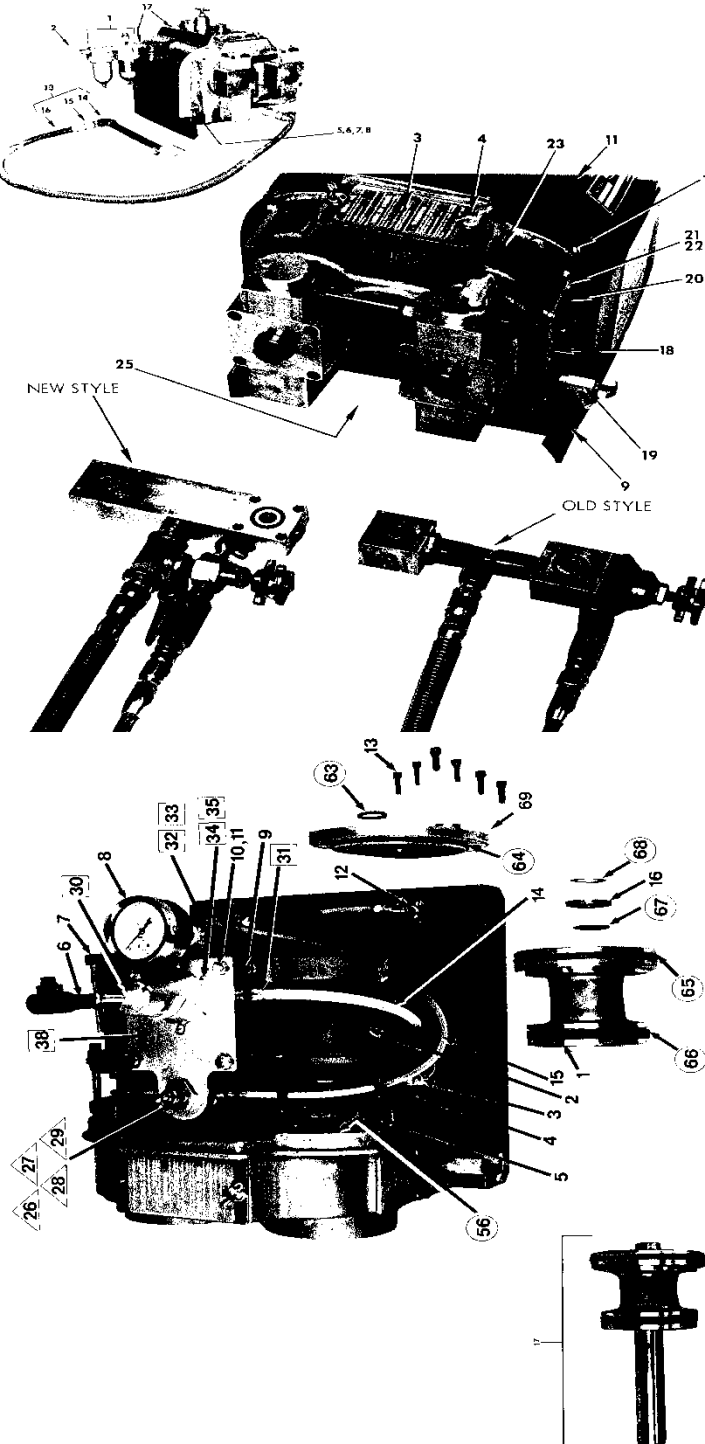
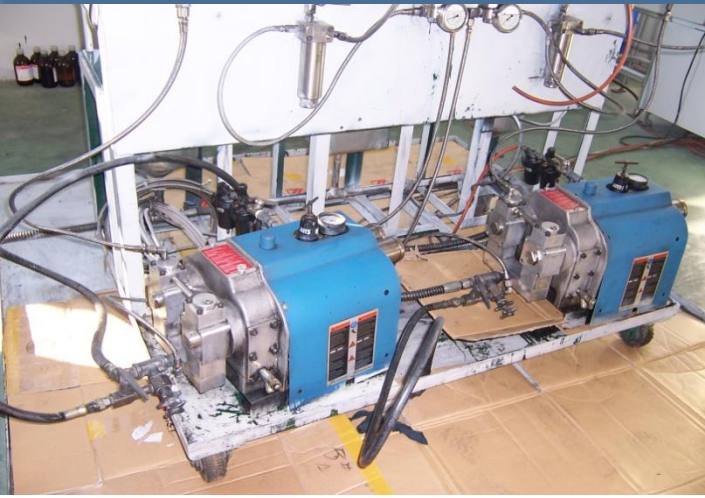
四：每个星期的维修保养：


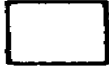

- 1, 每个星期必须清洁系统部件的外壳, 不要将部件直接放入溶剂中. 因为溶剂可能会对系统部件的密封件和O型圈产生影响.
- 2, 用电阻表检查系统部件的接地情况, 要求在泵和地面至少要有一兆欧姆.

备注：MP-II泵 需要用NORDSON 公司专用油。

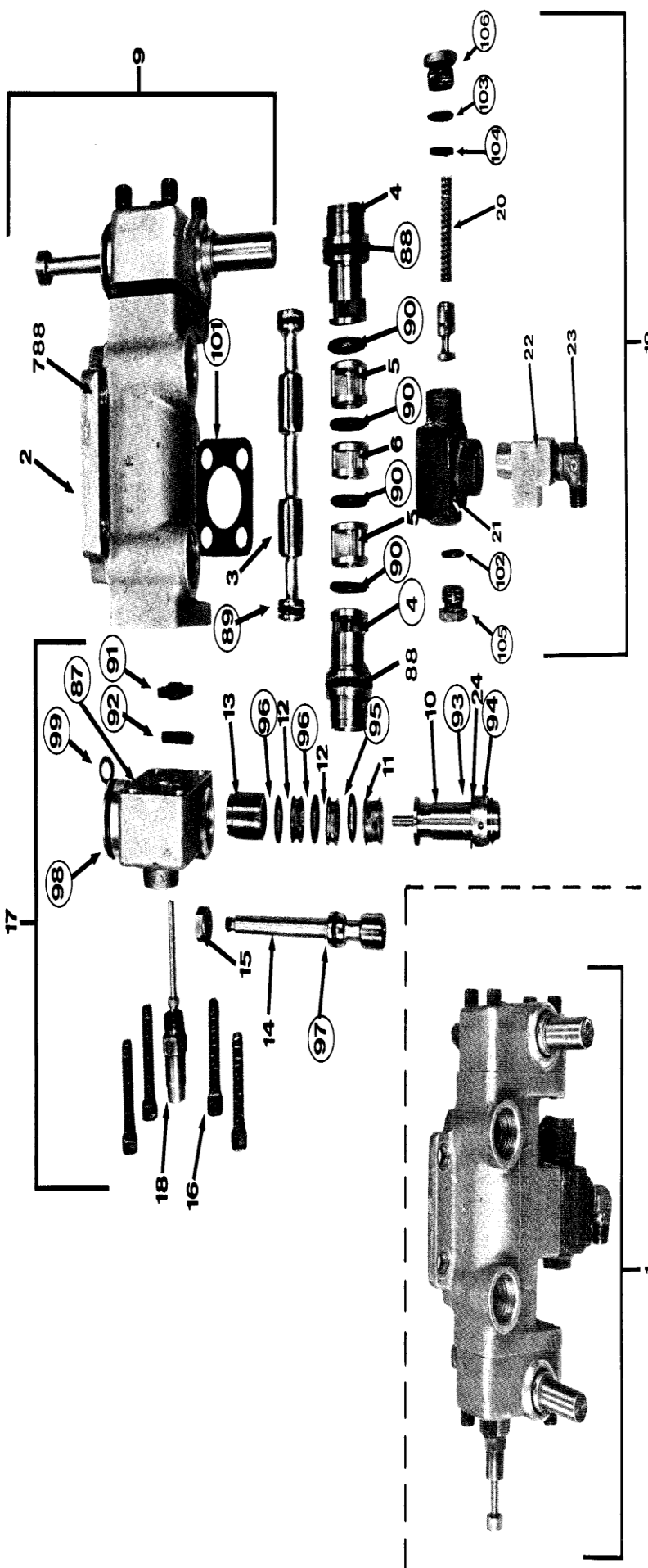
需要更多支持请联系：021-6676 3512, 6676 3513, www.toming.net

精修MP-II泵 / 质保壹年

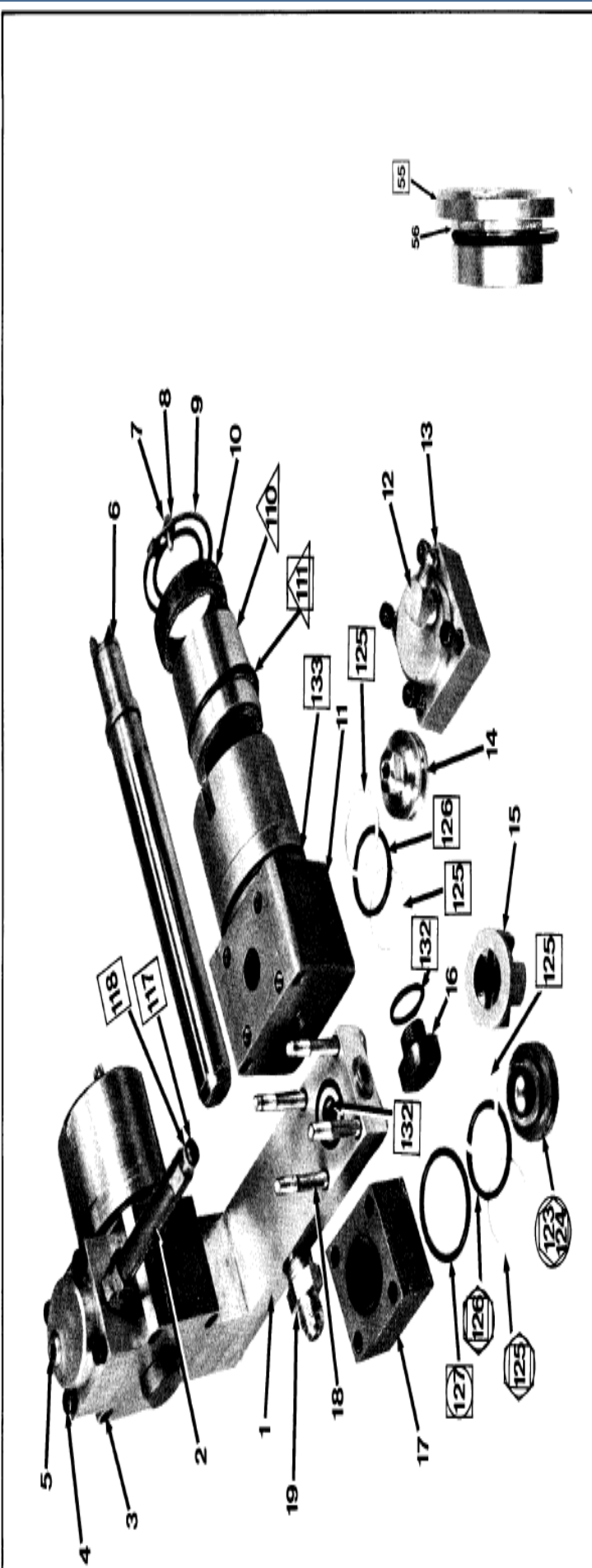






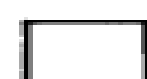

Key	Kit No.	Part No.
1		500 164
2		500 084
3		971 403
4		500 082
5		981 437
6		500 208
-		973 272
-		973 056
-		973 420
-		973 370
7		500 090
8 *		901 236
9		500 206
10		983 150
11		981 308
12		971 515
13		981 340
14		900 557
15		900 556
16		500 178
26	106 136	901 470
27		984 181
28		500 231
29		971 155
30	106 137	901 508
31		971 259
32		246 014
33		973 027
34		981 172
35		983 121
38		246 015
56	106 139	942 350
63		942 144
64		942 490
65		944 260
66		952 540
67		942 160
68		986 200
69		500 086
17		

精修MP-II泵 / 质保壹年

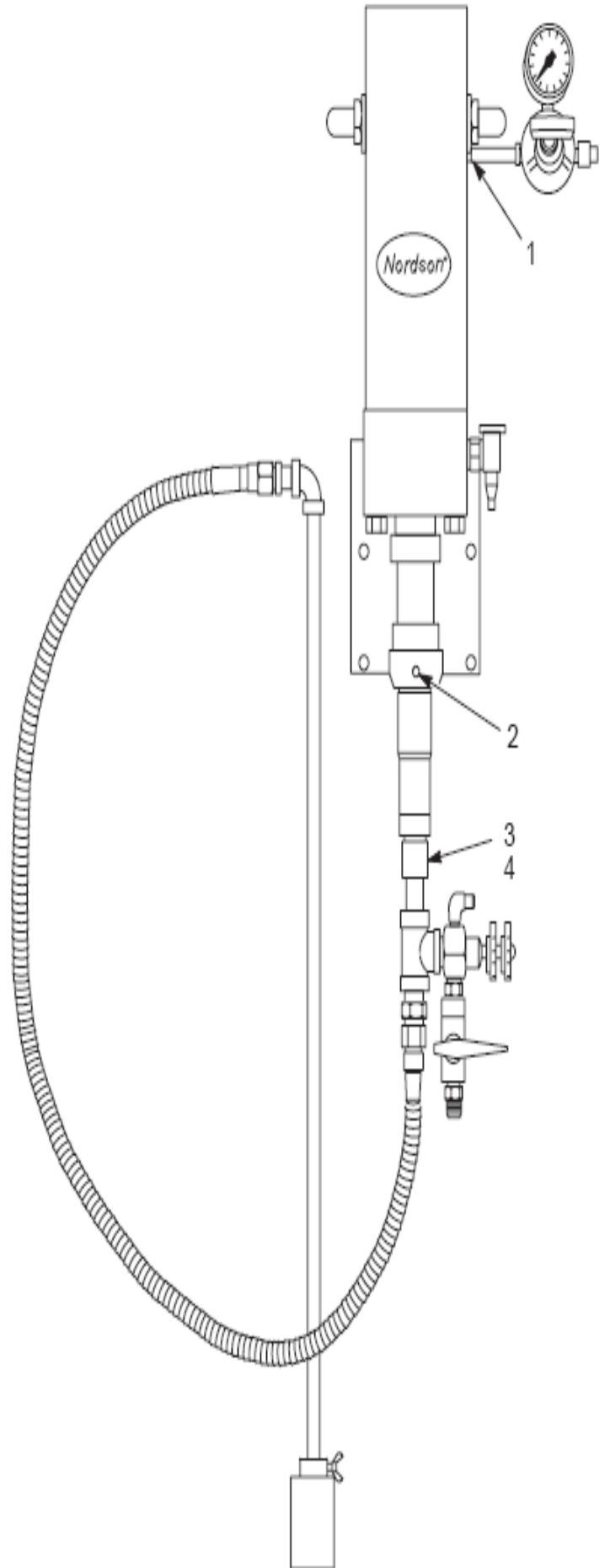


Key	Kit No.	Part No.
1		500 100
2		500 102
3*		246 025*
4		500 108
5*		246 020*
6*		500 109*
7		981 444
8		983 050
9		500 120
10		500 130
11		500 127
12		500 125
13		500 124
14		500 122
15		500 128
16		981 445
17		500 150
18		500 155
19		500 180
19		500 330
20		500 189
20		151 646
21		981 445
22	① ②	973 276
23	①	971 515
24		500 116
105		500 181
106		500 187
87	106 142	940 082
88*	○	942 144
89*		941 130
90*		942 100
91*		500 140
92*		945 004
93		986 103
94		986 602
95		945 005
96		941 130
97		941 101
98*		942 144
99		940 115
101		500 186
102		941 130
103		941 152
104		955 005
3		500 106

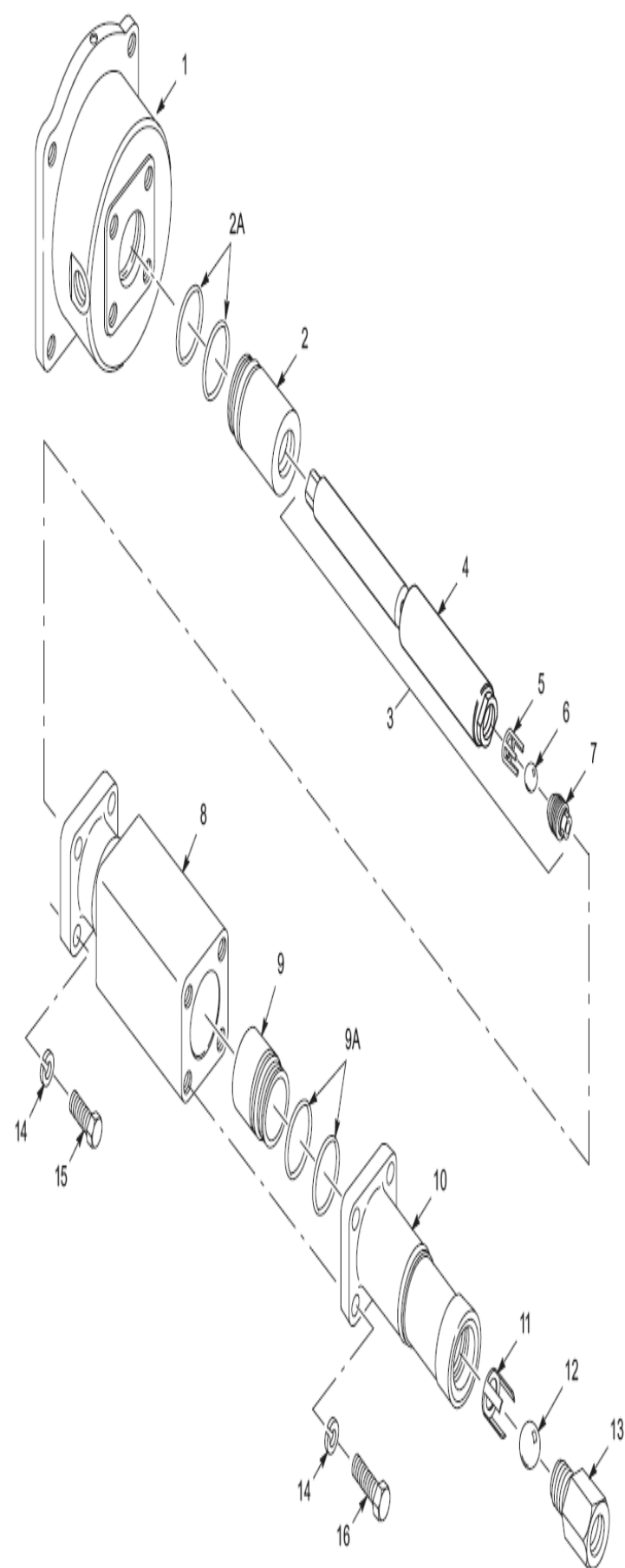


Key	Kit No.	Part No.
1		500 352
2		500 222
3		981 446
4		981 436
5		973 410
6		500 168*
6		500 410*
6		500 326*
7		981 207
8		983 041
9		500 017
10		500 016
11		500 009
12		972 176
13		500 050
14		246 019
15		244 892
16		500 021
17		500 065
18		981 348
19		972 112
-	106 162	*
110		500 010
111		942 300
-	106 163	*
110		500 420
111		942 300
-	106 295	*
110		500 312
111		942 300
-	106 167	*
123		
124		
125		942 200
126		954 015
127		942 230
-	106 144	
111		942 300
117		940 120
118		954 012
125		942 200
126		954 015
127		942 230
132		942 140
133		942 350
NS		941 170
-	106 145	
55		-
56		942 350

精修 25B泵 / 质保壹年



精修 25B泵 / 质保壹年



Item	Part	Description	Quantity	Note
-	245549	PUMP, hydraulic, 25B, 16:1, aluminum	1	
1	245504	CHAMBER, solvent	1	
2	333368	PACKING, upper, 25B, 16:1, aluminum, Type U	1	A
2A	940270	O-RING, hotpaint, 1.313 x 1.438 x 0.063	2	A
3	503230	PLUNGER, hydraulic, assembly, 25B, 16:1	1	
4	503396	PLUNGER, hydraulic, 25B, 16:1	1	
5	503134	CAGE, ball, pressure	1	B
6	900000	BALL, 440 stainless steel, 0.375, 50	1	B, C
7	-----	SEAT, ball, pressure	1	B, C
8	503103	SLEEVE, high pressure	1	
9	333371	PACKING, lower, 25B, 16:1, aluminum, Type U	1	A
9A	940300	O-RING, hotpaint, 1.625 x 1.75 x 0.063	2	A
10	244945	HOUSING, siphon, 16:1	1	
11	503123	CAGE, ball, siphon	1	B
12	900001	BALL, 440 stainless steel, 0.500, 50	1	B, D
13	-----	SEAT, ball, siphon	1	B, D
14	983160	WASHER, lock, split, $\frac{3}{8}$ in., steel, nickel	8	
15	981402	SCREW, hex head, $\frac{3}{8}$ -16 x 1.00 in., cap, zinc	4	
16	981408	SCREW, hex head, $\frac{3}{8}$ -16 x 1.25 in., cap, zinc	4	

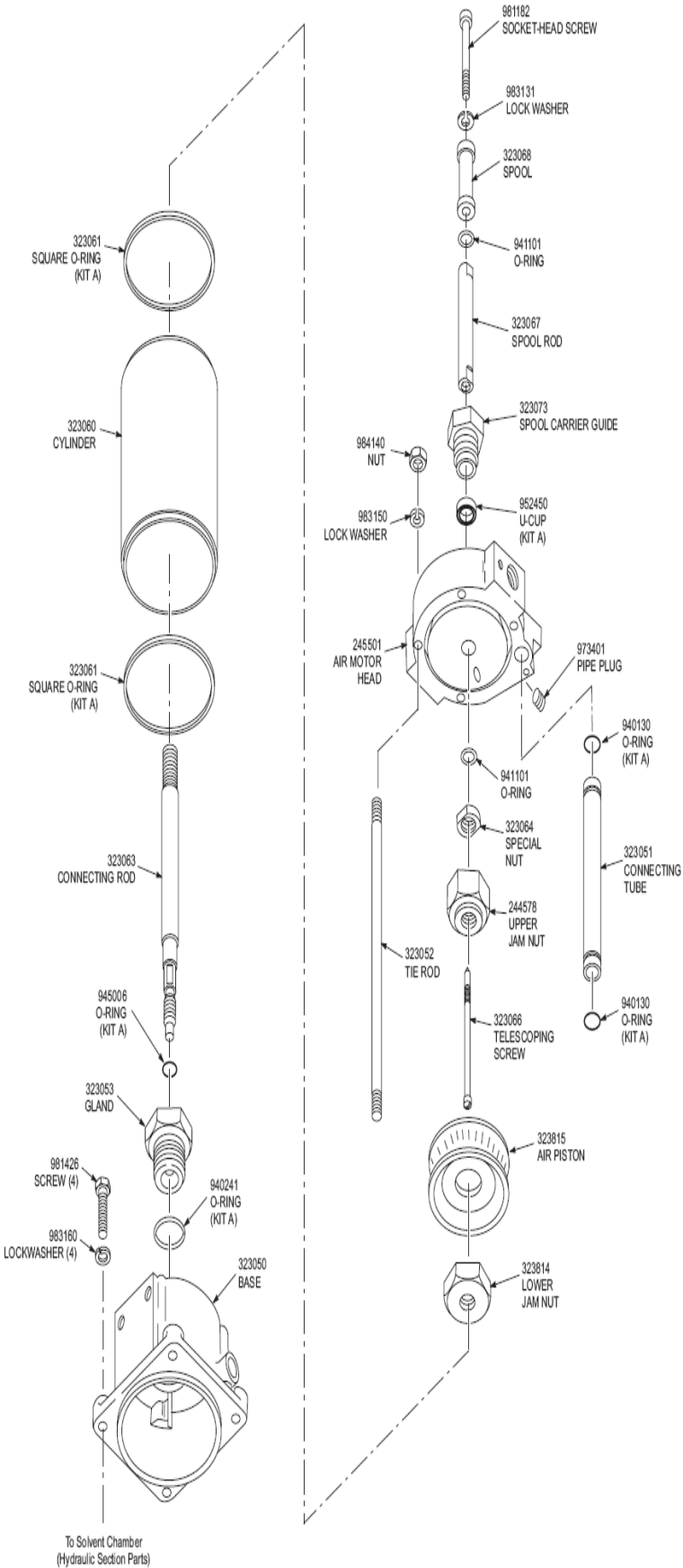
NOTE A: Noted parts included in Type U Hydraulic Service Kit, part 335380. Refer to page D-2-4 for other packing types.

B: Noted parts included in Ball Check Service Kit, part 106107.

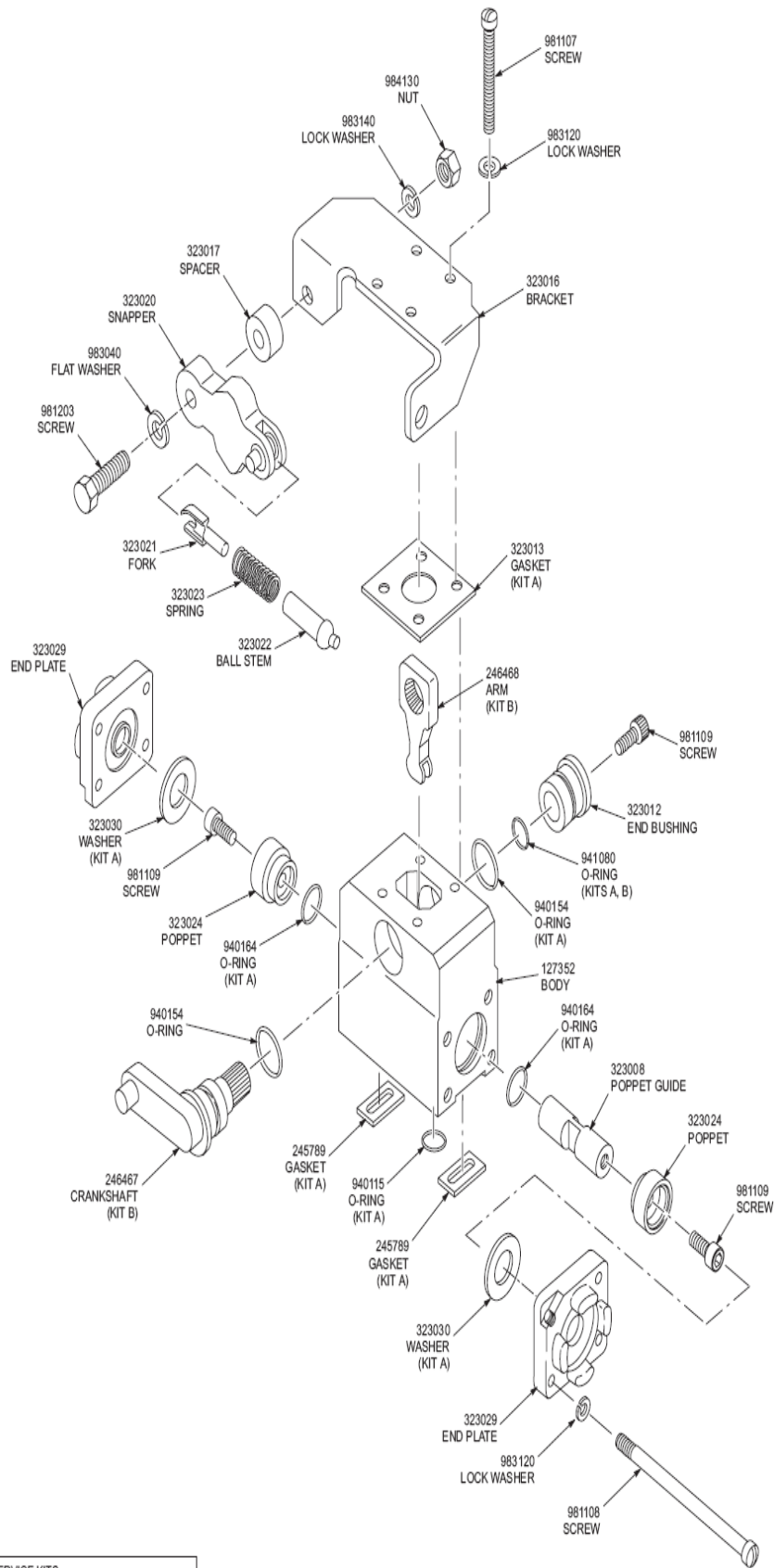
C: Noted parts included in Ball and Seat Kit, part 503132.

D: Noted parts included in Ball and Seat Service Kit, part 244826.

精修 25B泵 / 质保壹年

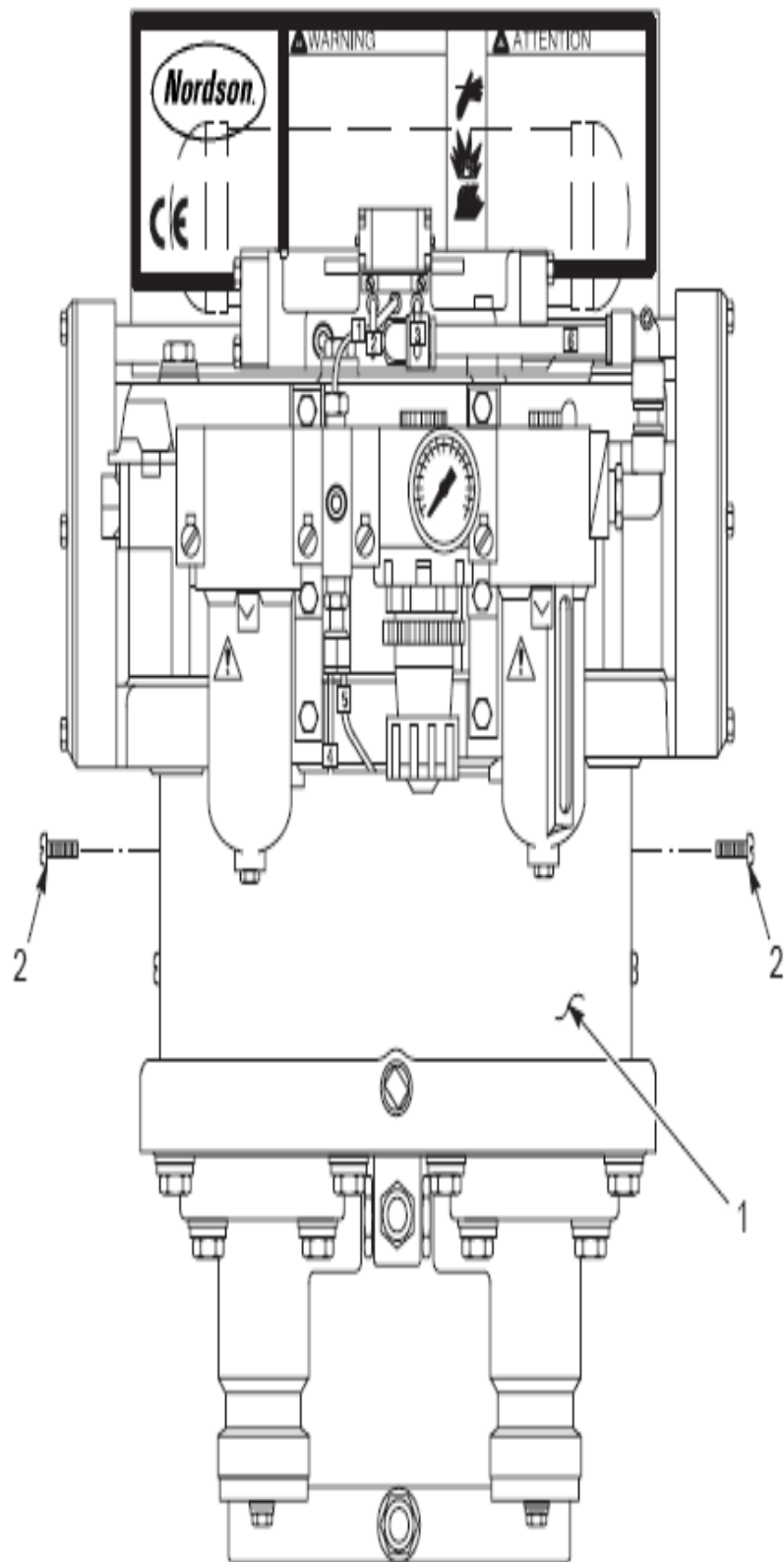


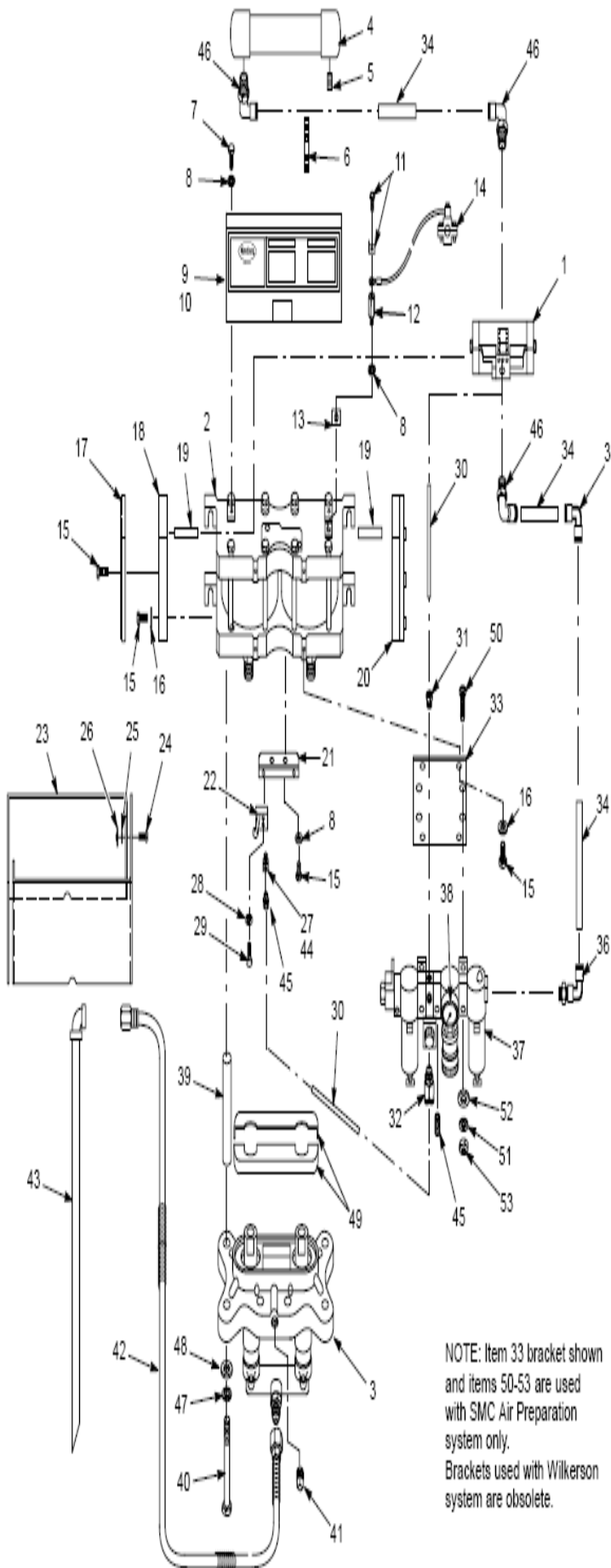
323001 AIR VALVE



SERVICE KITS:
KIT A: 106103 AIR VALVE SEAL KIT
KIT B: 106314 CRANKSHAFT AND ARM KIT

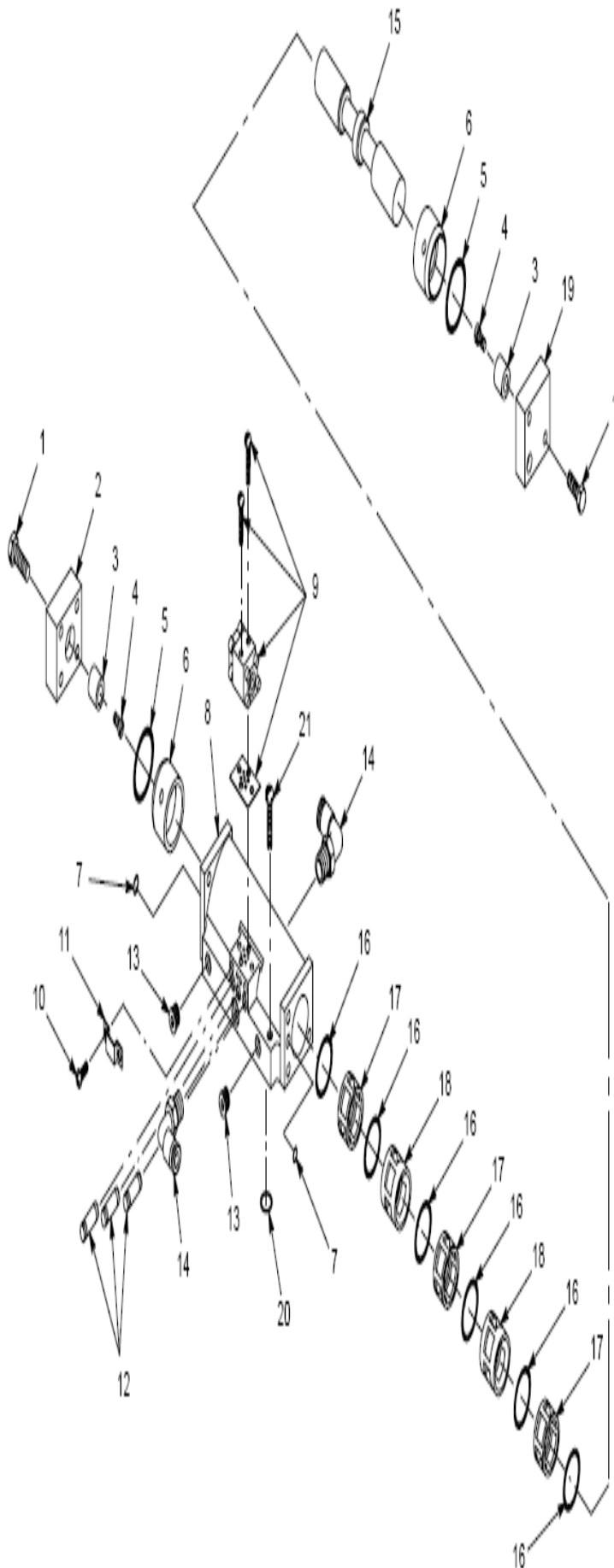
CP 泵





Item	Part	Description	Quantity	Note
1	106449	Valve assembly, air	1	A
2	-----	Air motor	1	B
3	-----	Hydraulic section	1	C
4	249417	Accumulator	1	
5	973401	Plug, pipe, 1/8 in. NPT, nylon	1	
6	970970	Clamp, hose, No. 52	2	
7	981239	Screw, hex head, 1/4-20 x 0.5 in., cap, zinc	2	
8	983140	Washer, lock, split, 0.20 in., steel, zinc	5	
9	-----	Cover, accumulator	1	
10	-----	Plate, data	1	
11	132054	Retainer, wire	1	
12	132154	Stud, ground	1	
13	240674	Tag, ground	1	
14	240976	Clamp, ground, w/wire	1	
15	981208	Screw, hex head, 1/4-20 x 0.625 in., cap, zinc	12	
15	981211	Screw, hex head, 1/4-20 x 0.75 in., cap, zinc	6	D
16	983041	Washer, flat, 0.25 x 0.5 x 0.049 in., zinc	10	
17	323773	Cover, muffler box	2	
18	249434	Housing, muffler, left	1	
19	249321	Tube, exhaust	2	
20	249433	Housing, muffler, right	1	
21	164418	Bracket, roller valve	1	
22	164419	Valve, roller operated	2	
23	148955	Cover, half, CP pump	2	
24	288145	Screw, captive, black	2	
25	141039	Retainer, captive screw, stainless steel	2	
26	984251	Nut, spring, type U, 10-24	2	
27	971605	Elbow, universal	4	
28	983111	Washer, lock, split, #8, steel, zinc	4	
29	981099	Screw, fillet head, 8-32 x 1 in., slotted, zinc	4	
30	900609	Tubing, nylon, 0.125 in. OD	AR	
31	972186	Connector, male, 1/8 in. tube x 1/4 in. NPT	1	
32	972188	Connector, Y-branch, 1/8 in. tube x 1/4 in. NPT	1	
33	1068359	Bracket, module	1	G
34	900610	Tubing, nylon, 0.50 in. OD	AR	
35	972187	Elbow, union, 1/2 in. tube	1	
36	972184	Elbow, male, 1/2 in. tube x 1/2 in. NPT	1	
37	1068742	Module, filter, regulator, lubricator, 1/2 in. NPT	1	E
38	901236	Gauge, air, 0-100 psi, 0-7 kg/cm ²	1	
39	249325	Spacer, tube	8	
40	981356	Screw, hex head, 1/2-13 x 7.5 in., cap, zinc	8	
41	973434	Plug, square head, 1/2 in. NPT, stainless steel	1	
42	827060	Hose, siphon, 1/2 in. ID, 5 ft, stainless steel fittings	1	
43	750256	Rod, siphon, 55 gal	1	
44	972185	Connector, male, 1/8 in. tube x #10-32	4	
45	973411	Plug, pipe, 1/4 in. NPTF	1	
46	972122	Elbow, male, 1/2 in. tube x 3/8 in. NPT	1	
47	983180	Washer, lock, split, 1/2 in.	8	
48	983007	Washer, flat, 0.531 x 1 x 0.063 in.	8	
49	118110	Cover, CP solvent chamber	1	
50	981307	Screw, socket, 3/16-18 x 0.75 in., zinc	4	G
51	983150	Washer, lock, split, 3/16, steel, zinc	4	G
52	983051	Washer, flat, 0.344 x 0.688 x 0.065 in., zinc	4	G
53	984449	Nut, hex, regular, 3/16-18, G8, zinc	4	G
NS	112244	Accessory group, SB-GF, CP	1	F
NS	105327	Accessory group, waterborne, CP	1	F
NS	179443	Accessory group, SB, EPR, CP	1	F
NS	105068	Decal, schematic	1	

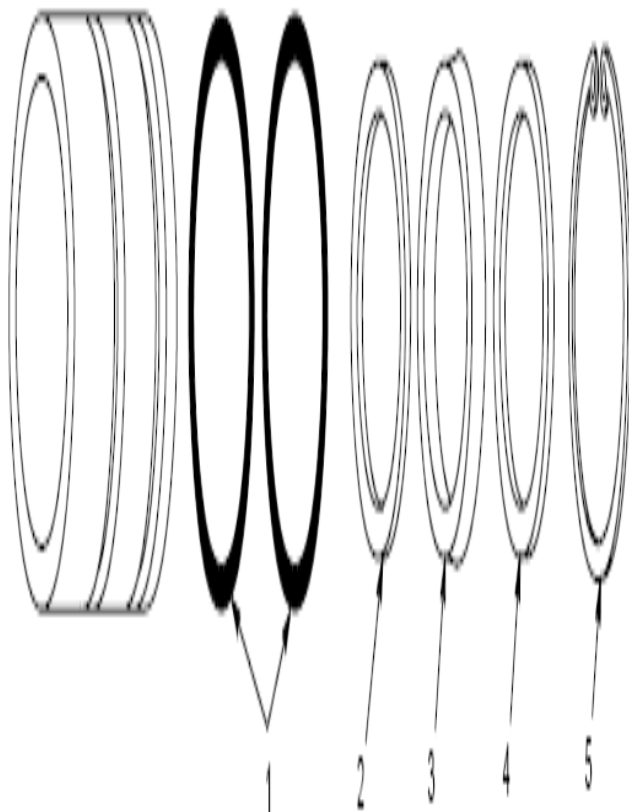
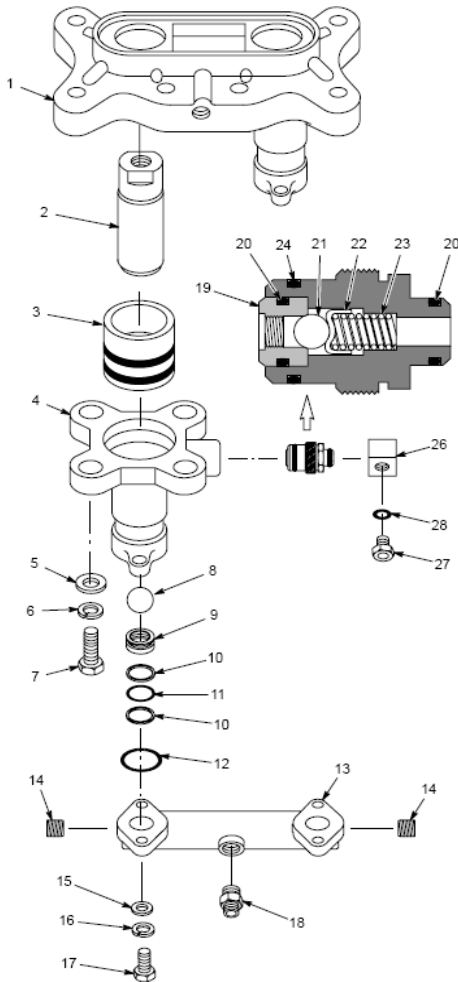
NOTE: Item 33 bracket shown and items 50-53 are used with SMC Air Preparation system only. Brackets used with Wilkerson system are obsolete.



Item	Part	Description	Quantity	Note
—	106449	Valve assembly, air	1	
1	981203	• Screw, hex head, 1/4-20 x 1.25 in., cap, zinc	4	
2	249319	• Cap, left end	1	
3	249323	• Bumper	2	
4	981770	• Screw, fillet head, w/lockwasher, 8-32 x 0.5 in.	2	A
5	940232	• O-ring, Buna-N, 1.063 x 1.188 x 0.063 in.	2	B
6	249309	• Spacer, end	2	
7	940074	• O-ring, Buna-N, 0.156 x 0.281 x 0.063 in.	2	B
8	249303	• Body, valve	1	
9	901166	• Valve, 2 position, 4 way, air pilot	1	
10	981039	• Screw, pan head, 6-32 x 0.312 in., zinc	2	
11	249317	• Deflector	1	
12	972185	• Connector, male, 1/8 in. tube x 10-32	3	A
13	973411	• Plug, pipe, socket, flush, 1/4 in. NPTF, zinc	2	
14	972122	• Elbow, male, 1/2 in. tube x 3/8 in. NPT	2	
15	249316	• Spool	1	
16	942104	• O-ring, molyfilled, 0.75 x 1 x 0.125 in.	6	B
17	249311	• Spacer, middle (red)	3	
18	249310	• Spacer (silver)	2	
19	249320	• Cap, right end	1	
20	940144	• O-ring, Buna-N, 0.5 x 0.625 x 0.063 in.	2	B
21	981445	• Screw, socket head, 5/16-18 x 1.5 in., Nylok	2	B

NOTE A: Before installing, apply thread lock compound, part 900424 (VC-3).

B: Included in air valve service kit part 106450. Refer to page 7-21 for kit parts list.



Item	Part	Description	Quantity	Note
3	112242	Gland assembly, solvent packing	1	B
11	942200	O-ring, hot paint, 1.375 x 1.625 x 0.125 in.	2	A
12	940330	O-ring, hot paint, 2.00 x 2.125 x 0.063 in.	2	A
20	940160	O-ring, hot paint, 0.625 x 0.75 x 0.063 in.	4	A
24	940222	O-ring, hot paint, 1.00 x 1.125 x 0.063 in.	2	A
27	249356	Fitting, 3/8 in. NPTF, w/O-ring	1	
28	945017	• O-ring, hot paint, 3/8 in. tube	8	

NOTE A: Included in hydraulic seal and ball check service kits. Refer to Service Kits.

B: Packing gland service kit available. Refer to page 7-21.



Item	Part	Description	Quantity	Note
—	112243	Service kit, packing gland repair	1	A
1	942300	• O-ring, hot paint, 2.50 x 2.75 x 0.125 in.	4	
2	112238	• Bearing, plunger	2	
3	112239	• Seal, w/spring, 2.00 x 1.60 x 0.21 in.	2	
4	112237	• Spacer, packing gland	2	
5	986026	• Ring, retaining, internal, 200, spiral	2	

NOTE A: Pumps manufactured before June 1992 use type-G (polyurethane U-cup) packing glands, part 106452.

To repair type-G packing glands order kit 106453. To replace type-G packing glands with packing glands with spring-loaded seals, order packing gland assembly, part 112242.

PermoFlo 830 泵

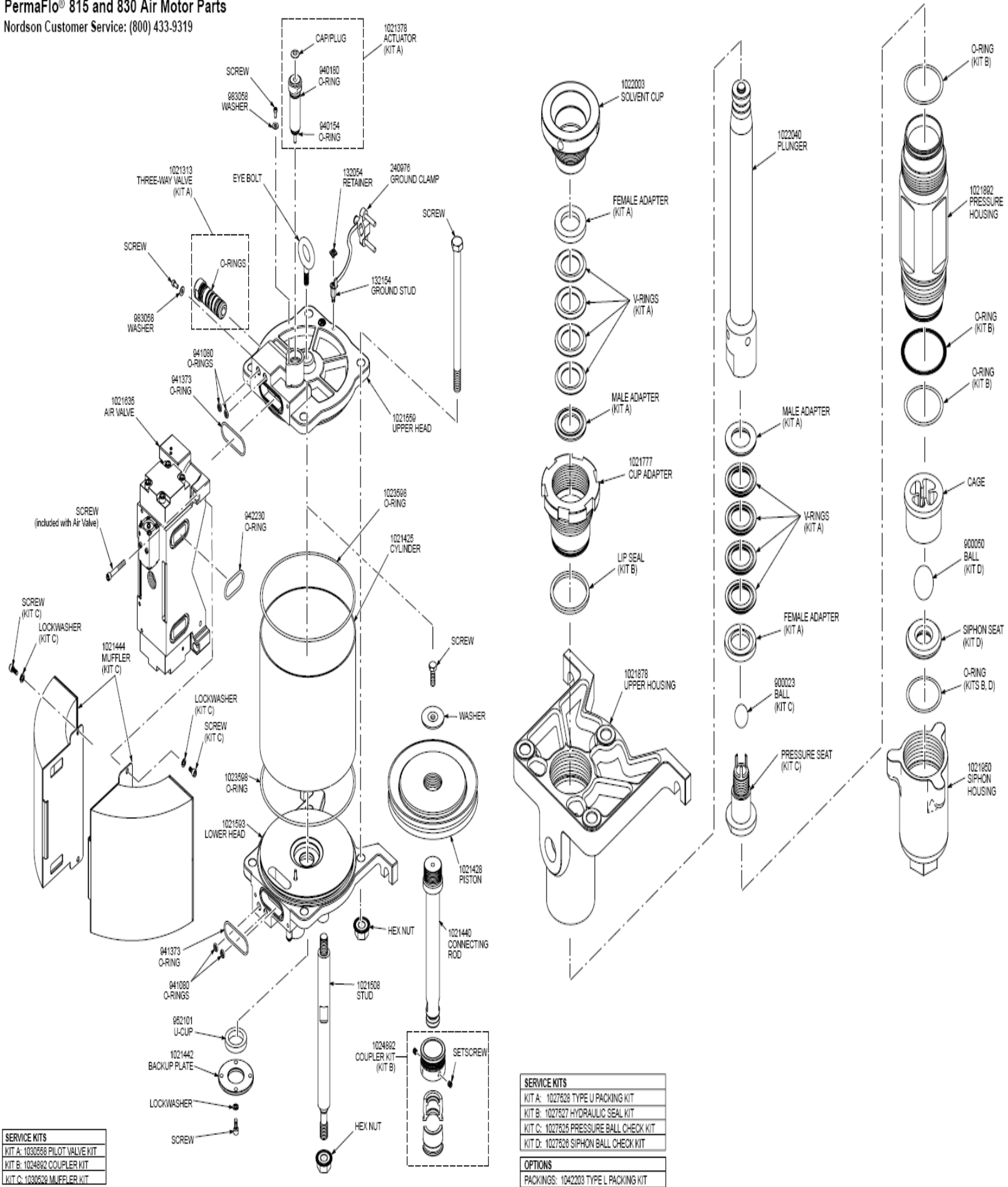


Pump Model	PermaFlo® 815	PermaFlo® 830
		
Part Number		
Type U packings	1024648	1023362
Type F packings	1065204	1065202
Type D packings	1085453	1085452
Fluid/Air Ratio	15:1	30:1
Air Motor		
Diameter	203mm (8.0 in)	203mm (8.0 in)
Stroke	119mm (4.7 in)	119mm (4.7 in)
Fluid Delivery at 60 cycles*/min		
l/min (gpm)	30.8 (8.16)	14.8 (3.92)
Liters (gal)/cycle*	0.51 (0.136)	0.24 (.065)

* 1 Cycle = 2 strokes (1 up and 1 down)

PermoFlo 830 泵

PermaFlo® 815 and 830 Air Motor Parts
 Nordson Customer Service: (800) 433-9319



需要更多支持请联系: 021-6676 3512, 6676 3513, www.toming.net

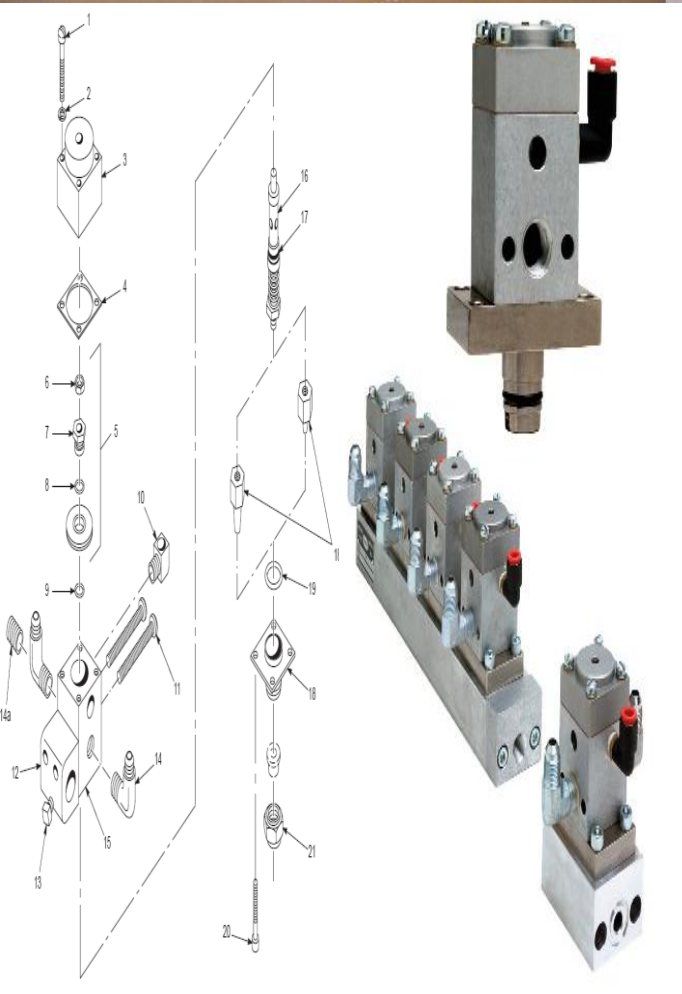
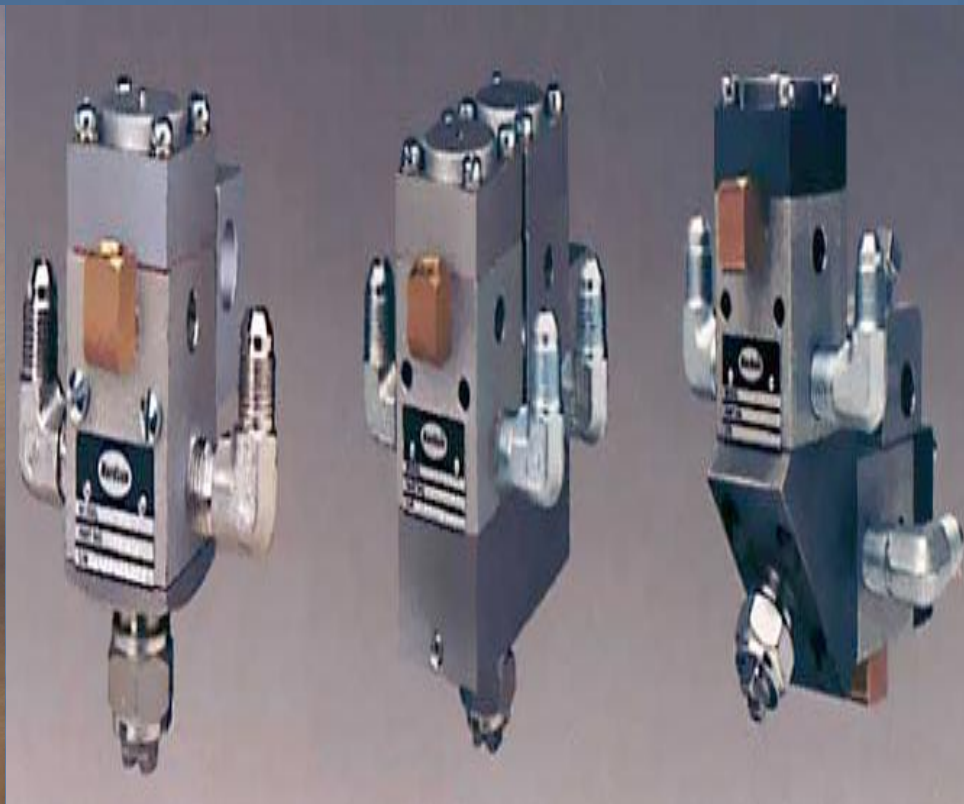
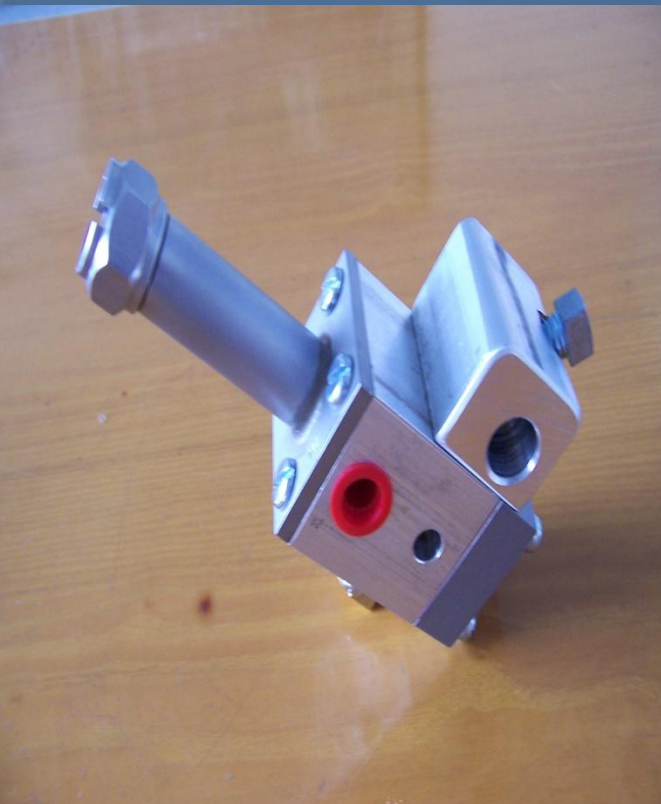
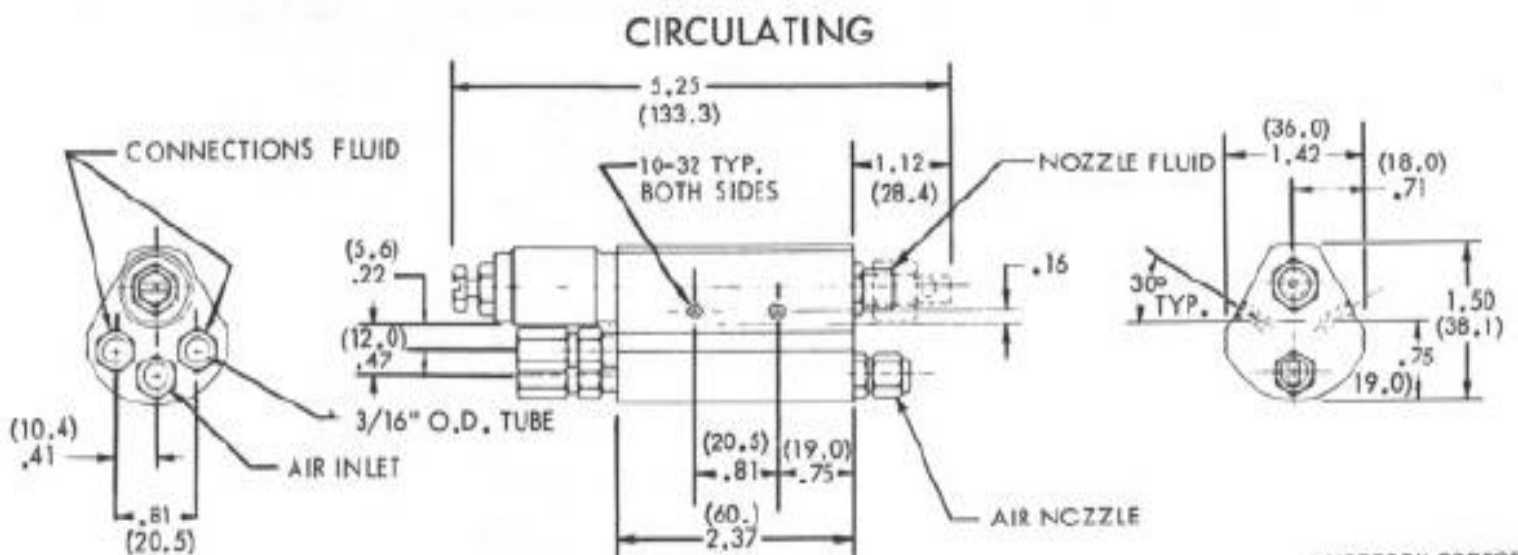
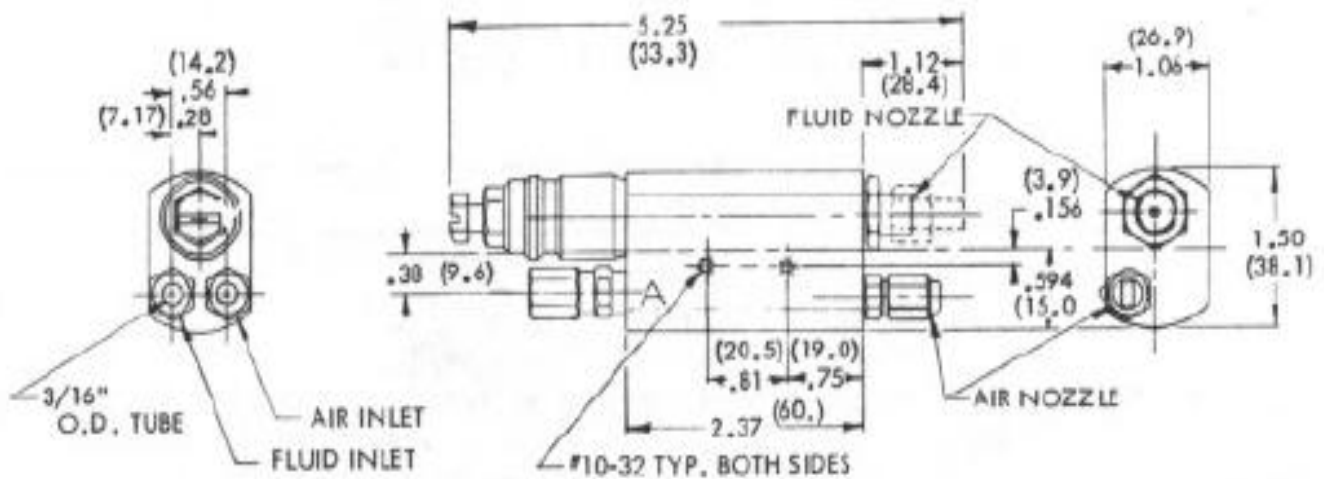


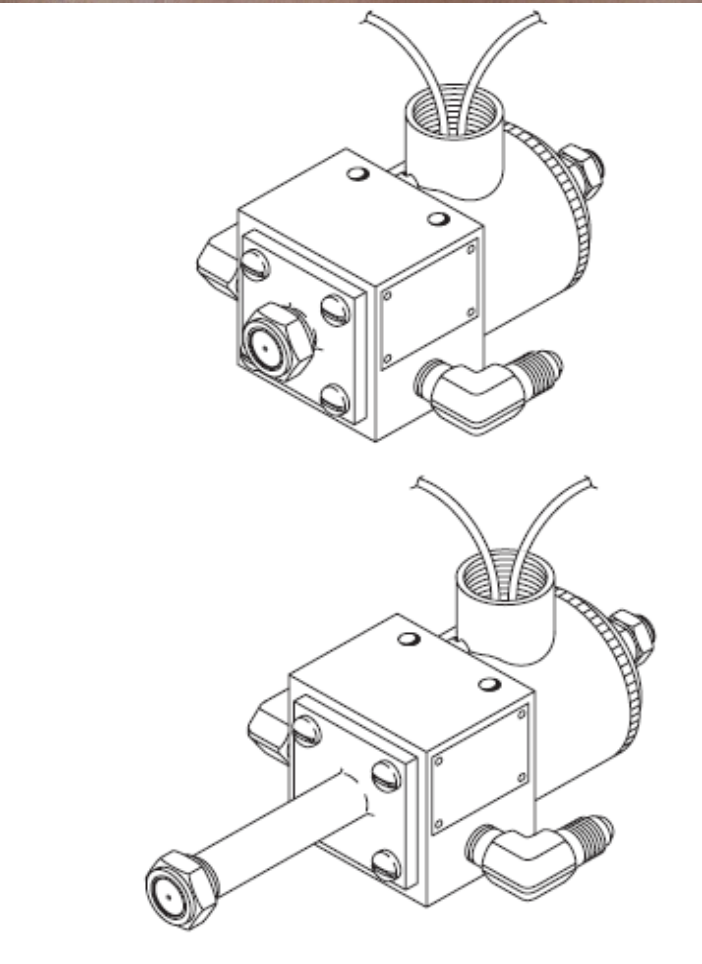
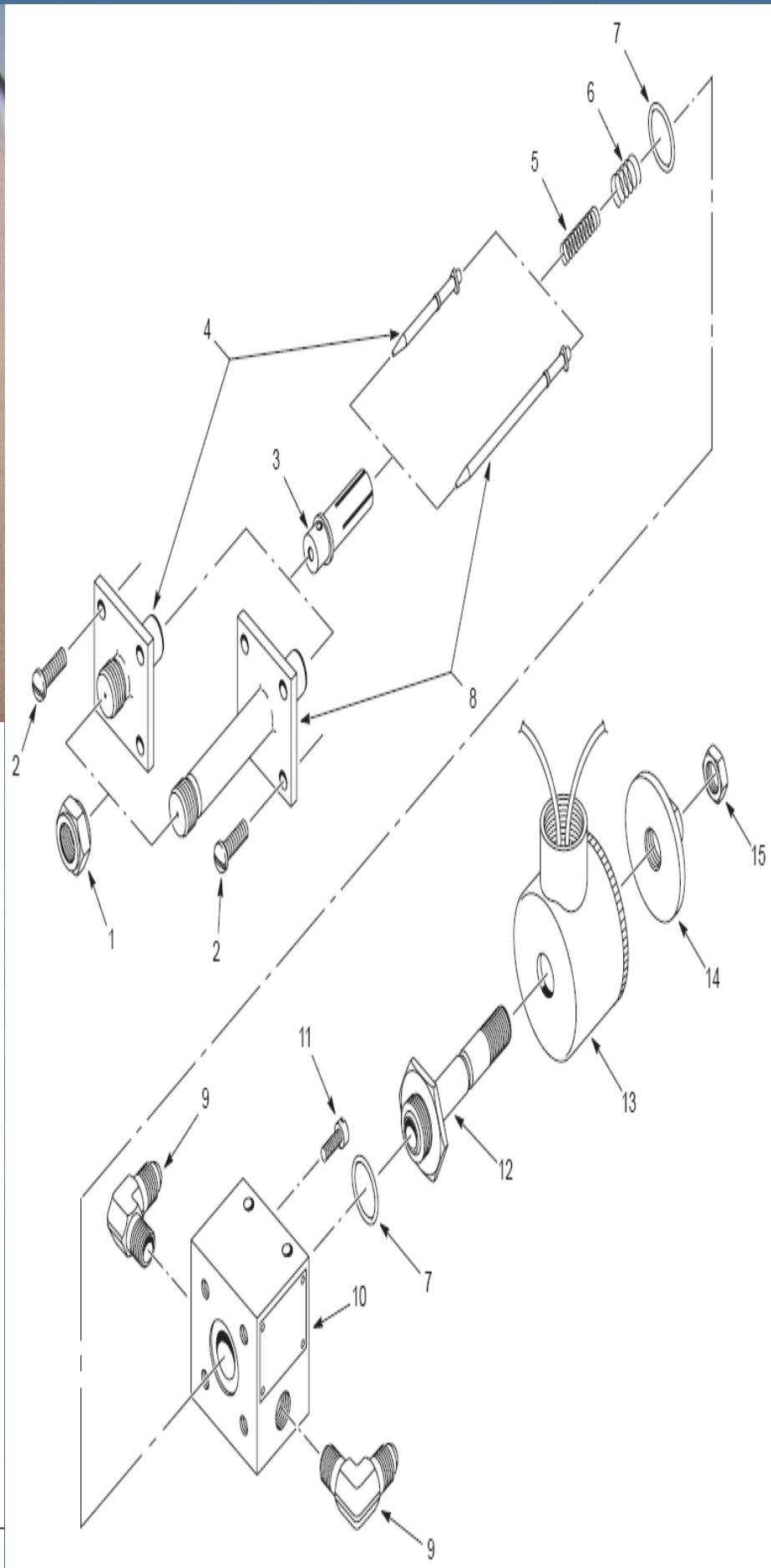


Figure 1 - Nordson Model A9A Gun

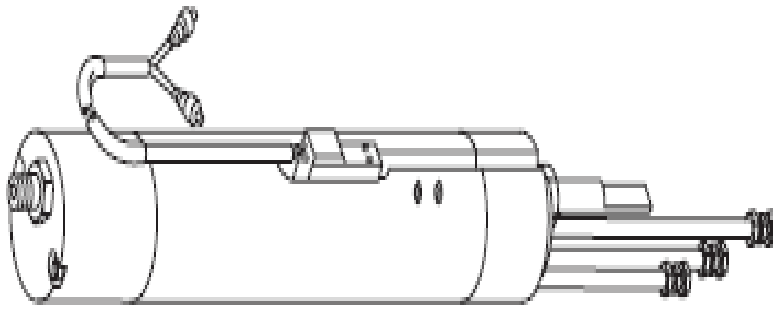


NORDSON CORPORATION

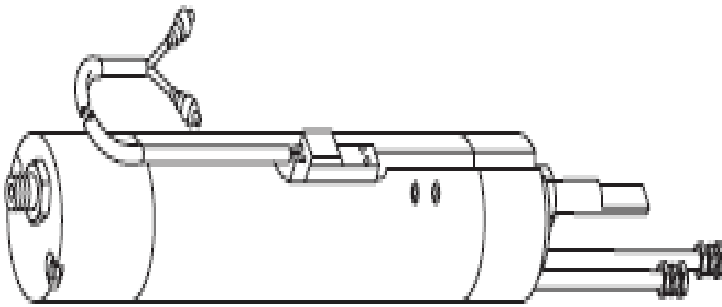
A10A 喷枪



A10A Automatic Electric Spray Guns



Locally Actuated Circulating



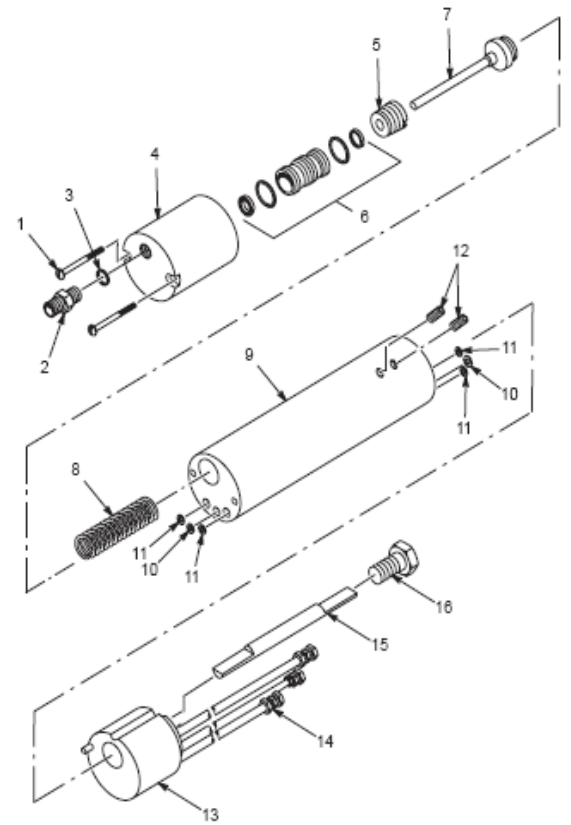
Locally Actuated Non-Circulating



Remotely Actuated Circulating



Remotely Actuated Non-Circulating



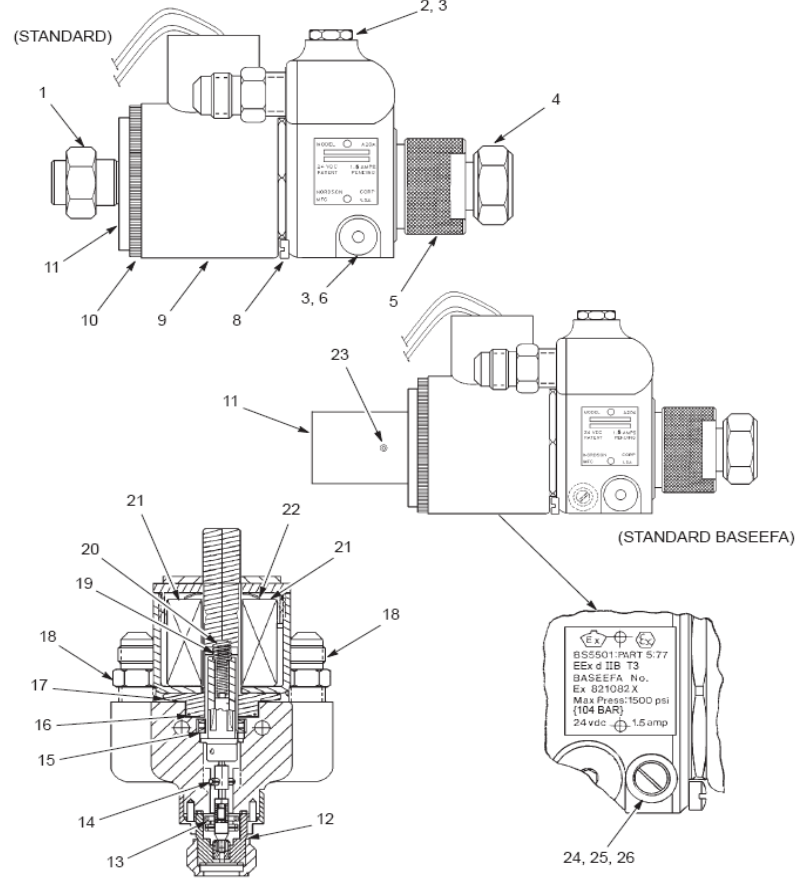
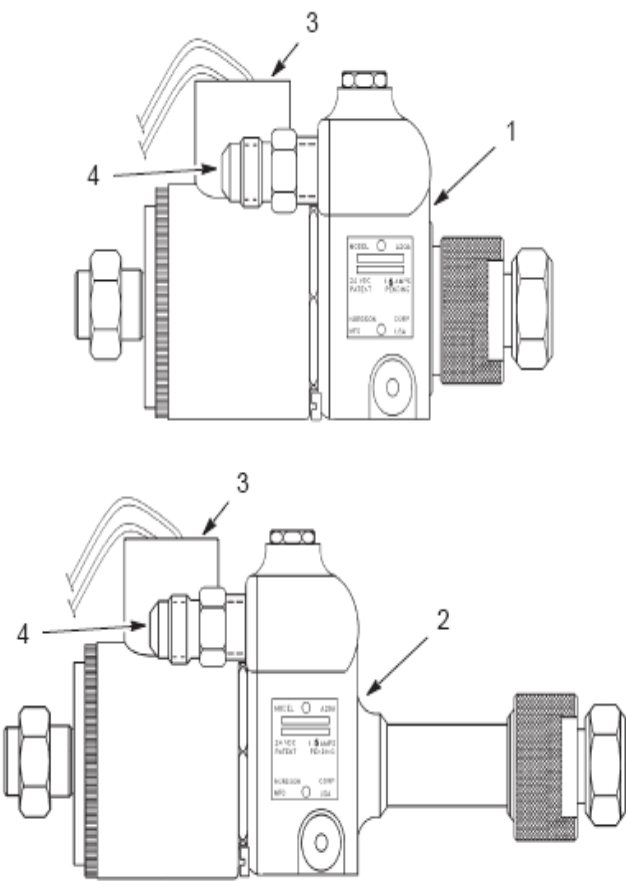
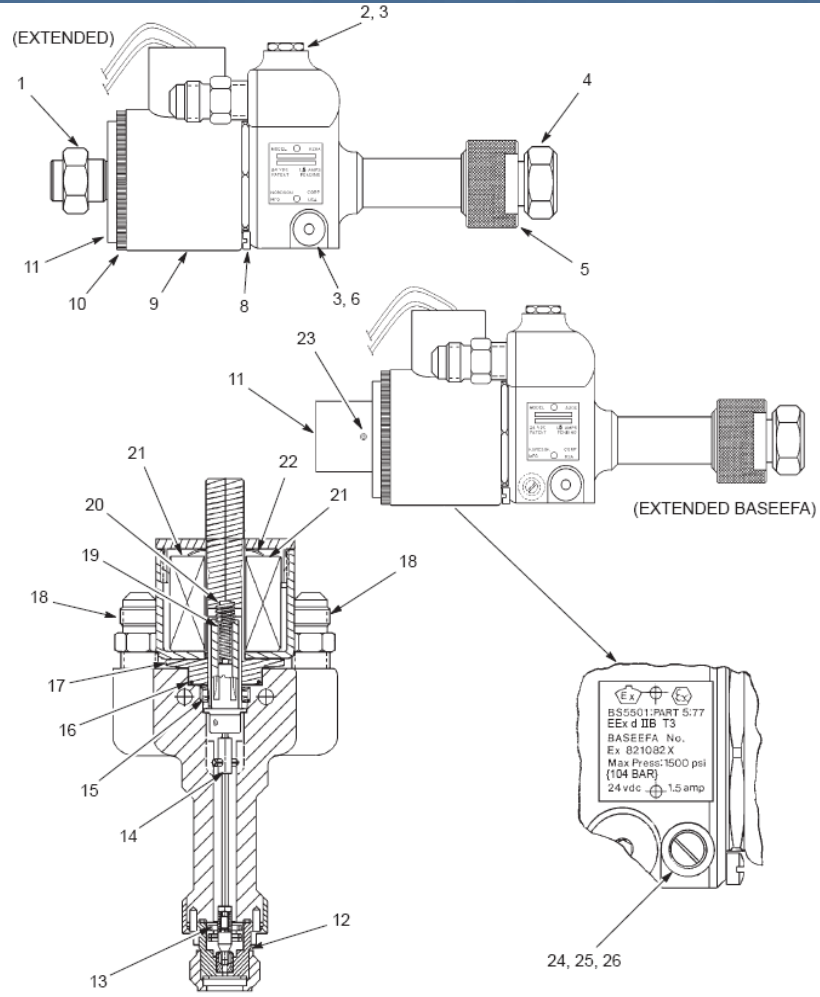
Remotely Actuated, Circulating A16A Gun

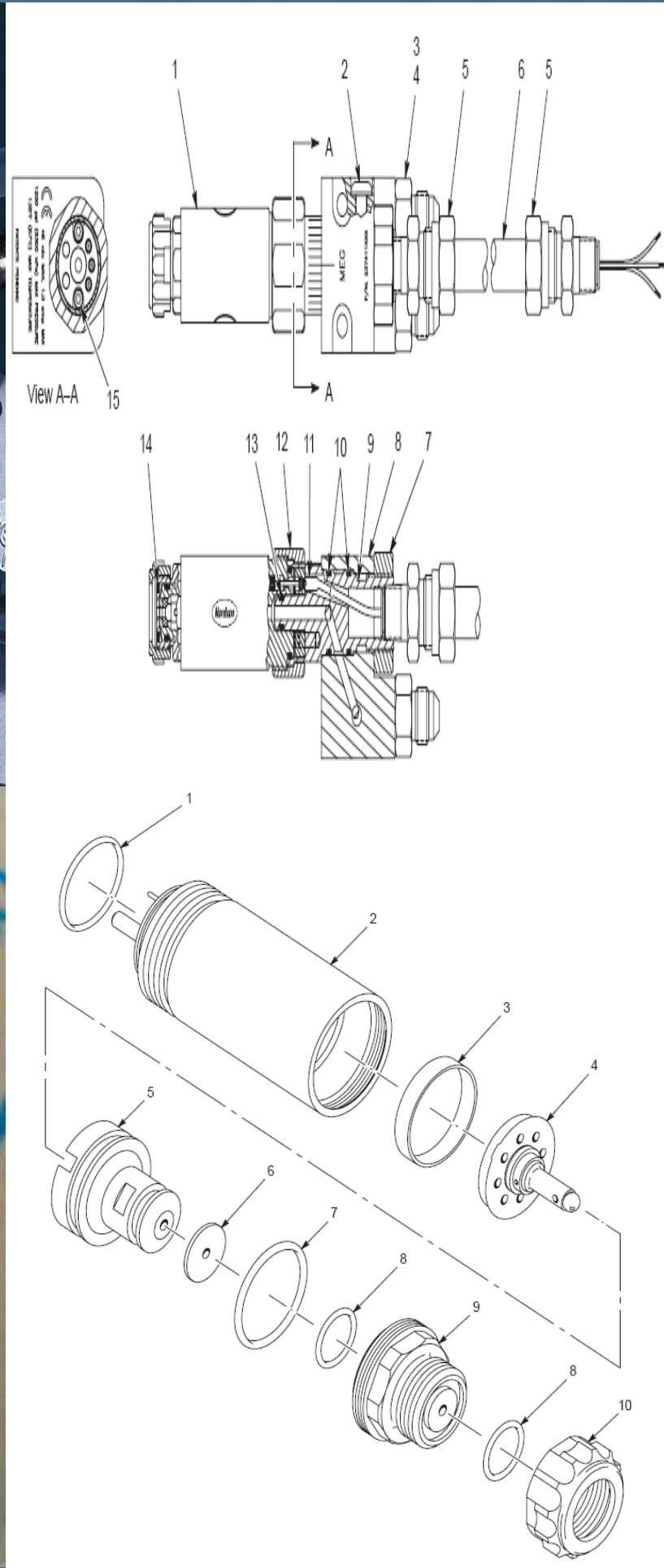
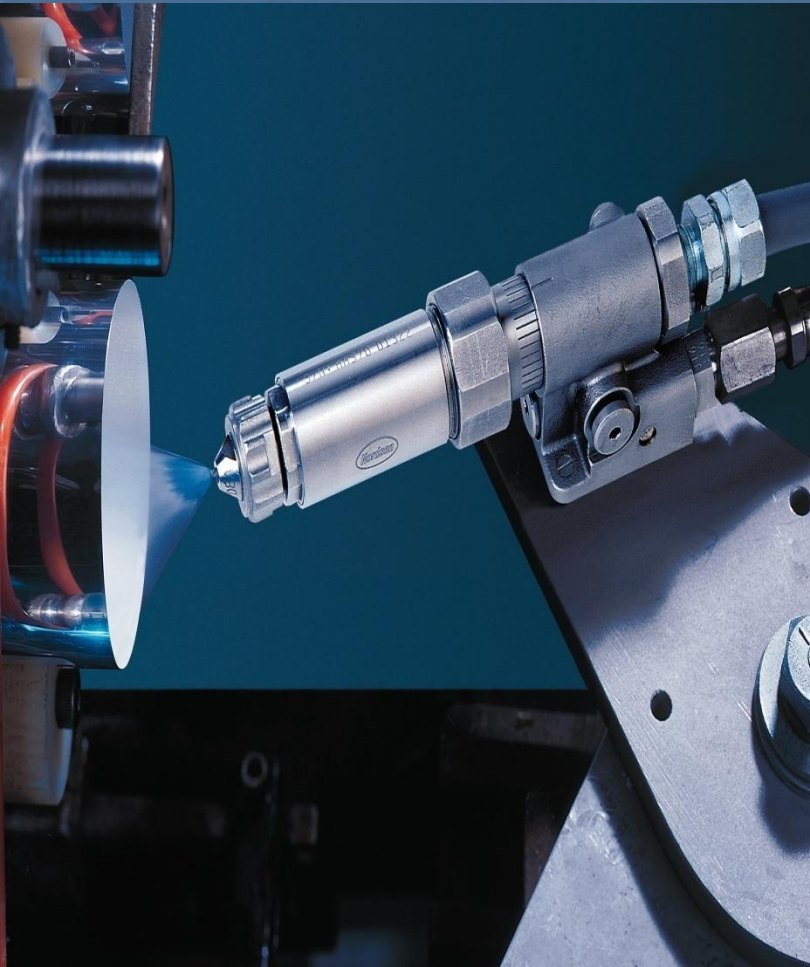
Item	Part	Description	Quantity	Note
—	112176	GUN, A16A, circulating, remotely actuated, inside stripe	1	
—	112178	* GUN ASSEMBLY, A16A, circulating, remotely actuated	1	
1	981742	** SCREW, fillet head, #6-32 x 2.000 in., slotted, zinc	2	
2	** SEAT, assembly	1	A
3	945080	** O-RING, Thiokol, 3/8-in. tube	1	A
4	** BODY, gun	1	
5	** RETAINER	1	
6	112150	** CARTRIDGE, seal, assembly	1	A
7	272280	** SERVICE KIT, needle with piston	1	A
8	152934	** SPRING, compression, 0.870 x 0.380 OD x 0.062 in.	1	
9	112180	** MANIFOLD, remote	1	
10	940052	** O-RING, Buna-N, 0.094 x 0.219 x 0.063 in.	2	A
11	940053	** O-RING, Teflon, 0.094 x 0.218 x 0.063 in.	4	A
12	981212	** SCREW, socket set, 1/4-20 x 0.375 in., cup	2	
13	112185	* CAP, end, assembled, circulating	1	
14	112187	** UNION, straight	3	
15	112175	* ROD, 0.312 in. mounting	1	
16	112174	* RETAINER, end cap	1	

NOTE: A: This part is available in one or more service kits. Refer to Service Kits on page 28.

A16A Inside Stripe Guns

A20A 喷枪





单/双联过滤器



Part	Description
161 102	Screen, reinforced, .002 in.
161 103	Screen, reinforced, .003 in.
161 104	Screen, reinforced, .004 in.
161 106	Screen, reinforced, .006 in.
161 109	Screen, reinforced, .009 in.
161 112	Screen, reinforced, .012 in.
161 115	Screen, reinforced, .015 in.
161 120	Screen, reinforced, .020 in.
161 020	Screen, not reinforced, .020 in.
161 030	Screen, not reinforced, .030 in.

喷涂系统组件

过滤器



调压器



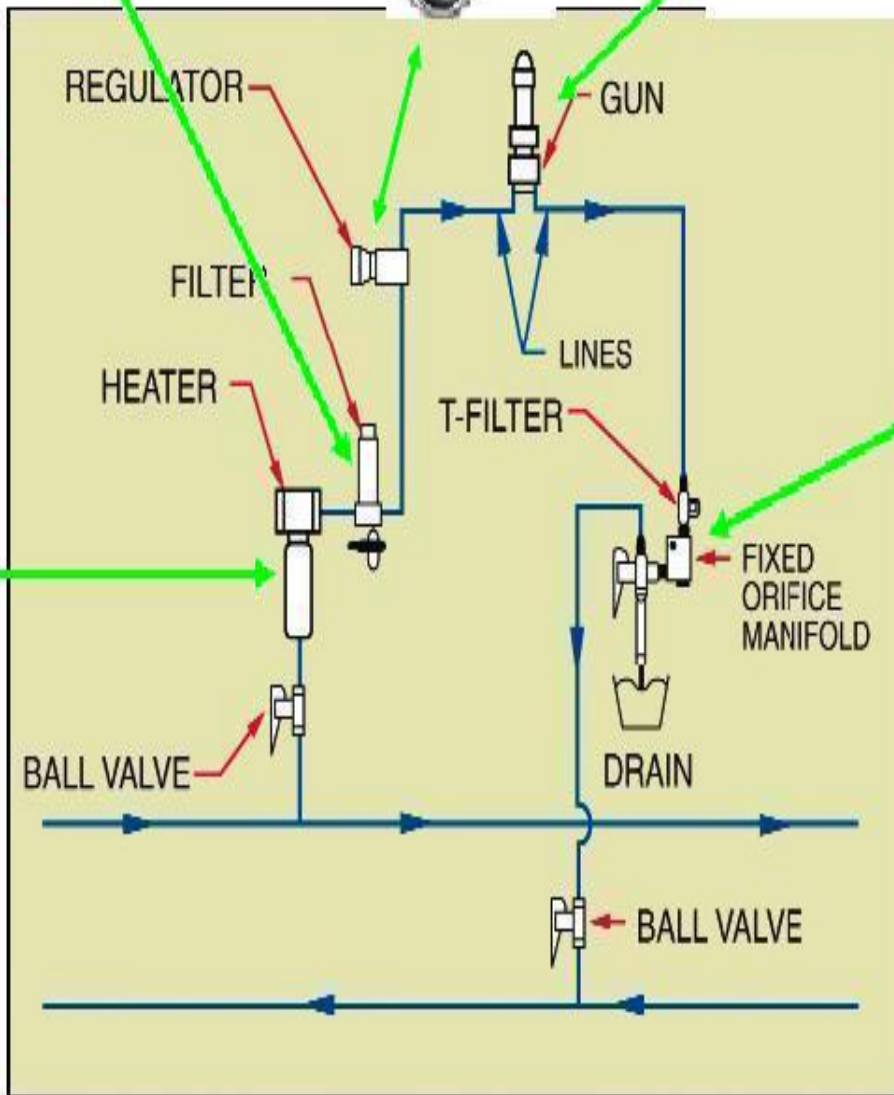
喷枪



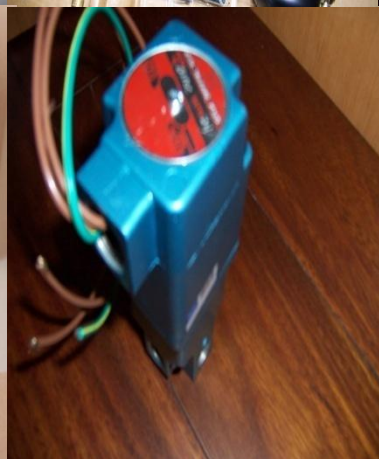
SPC限流、循环套件



加热器



喷涂系统组件

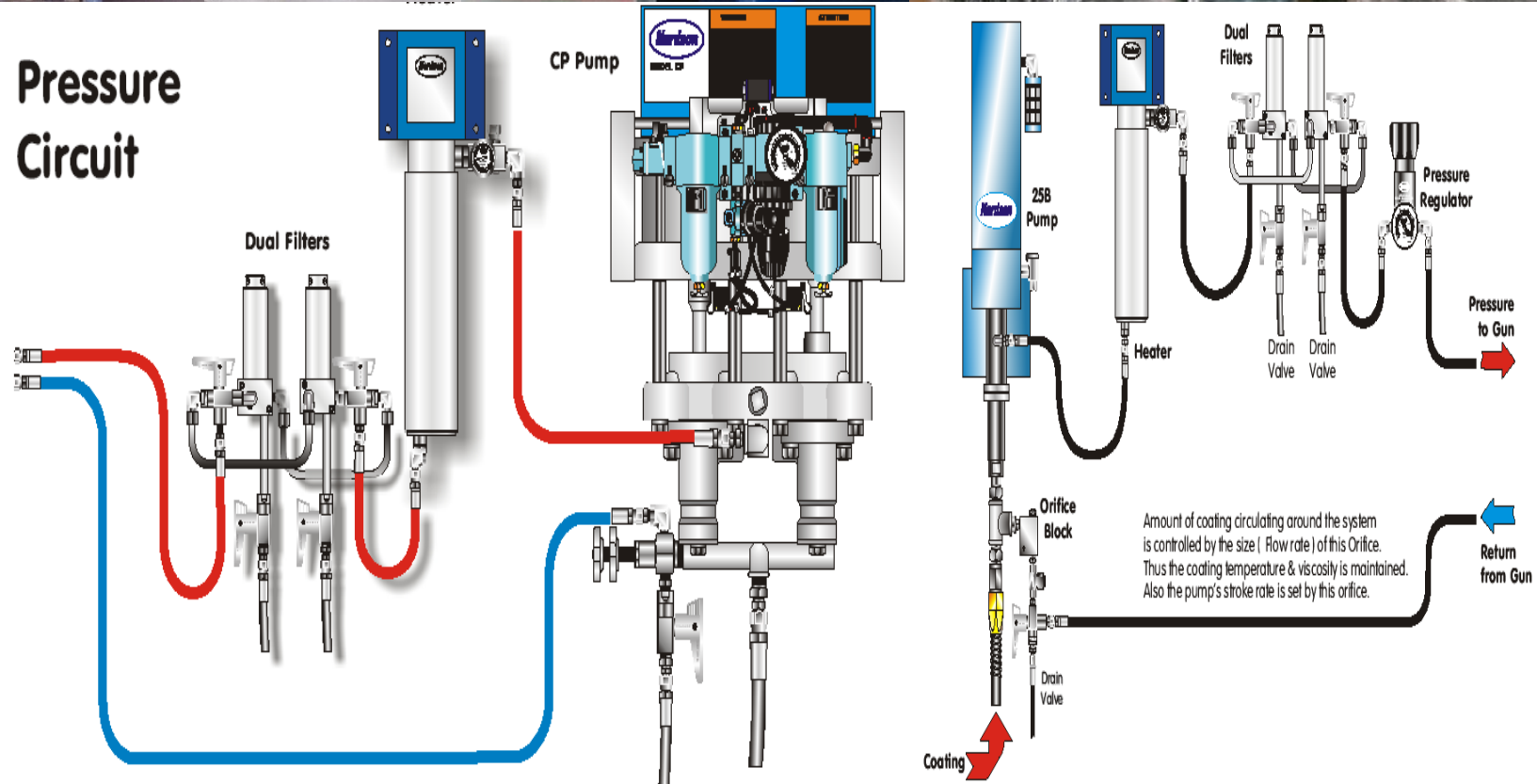
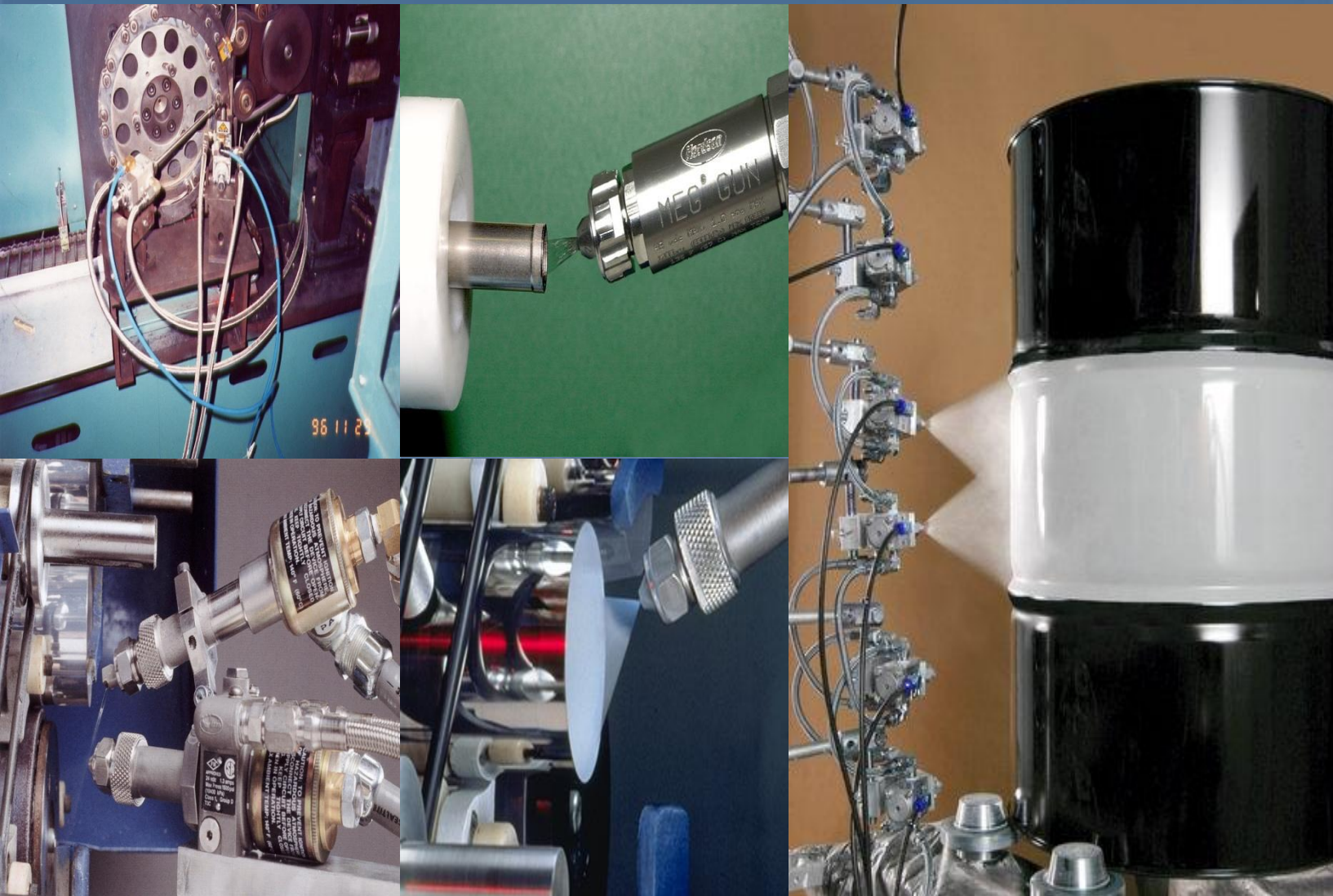


喷嘴/顶针



管子/控制器/加热器





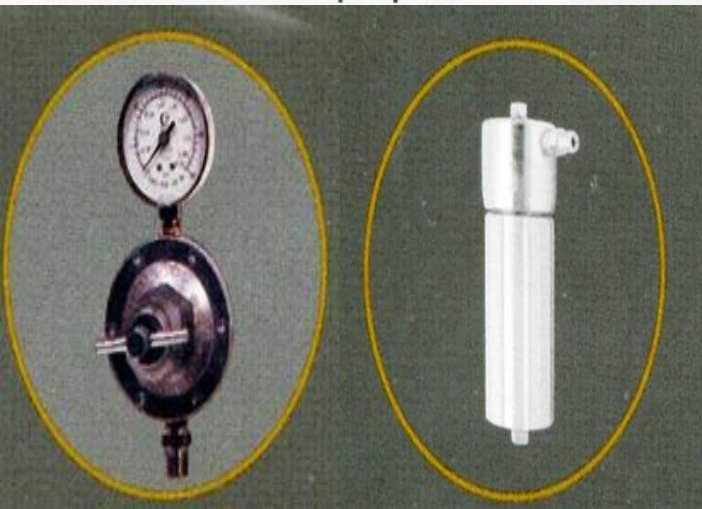
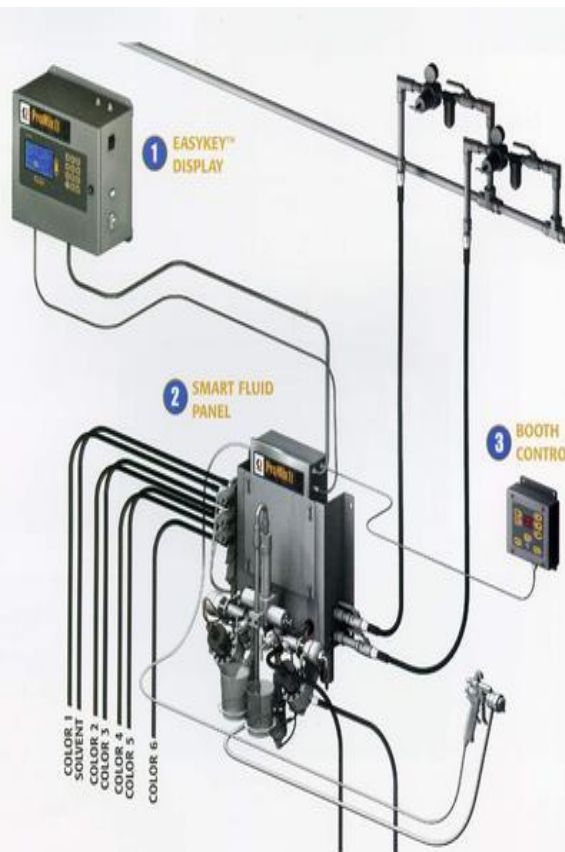


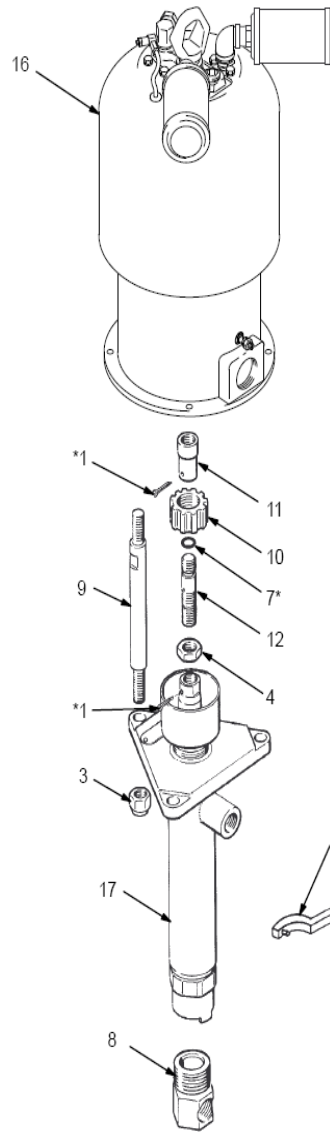
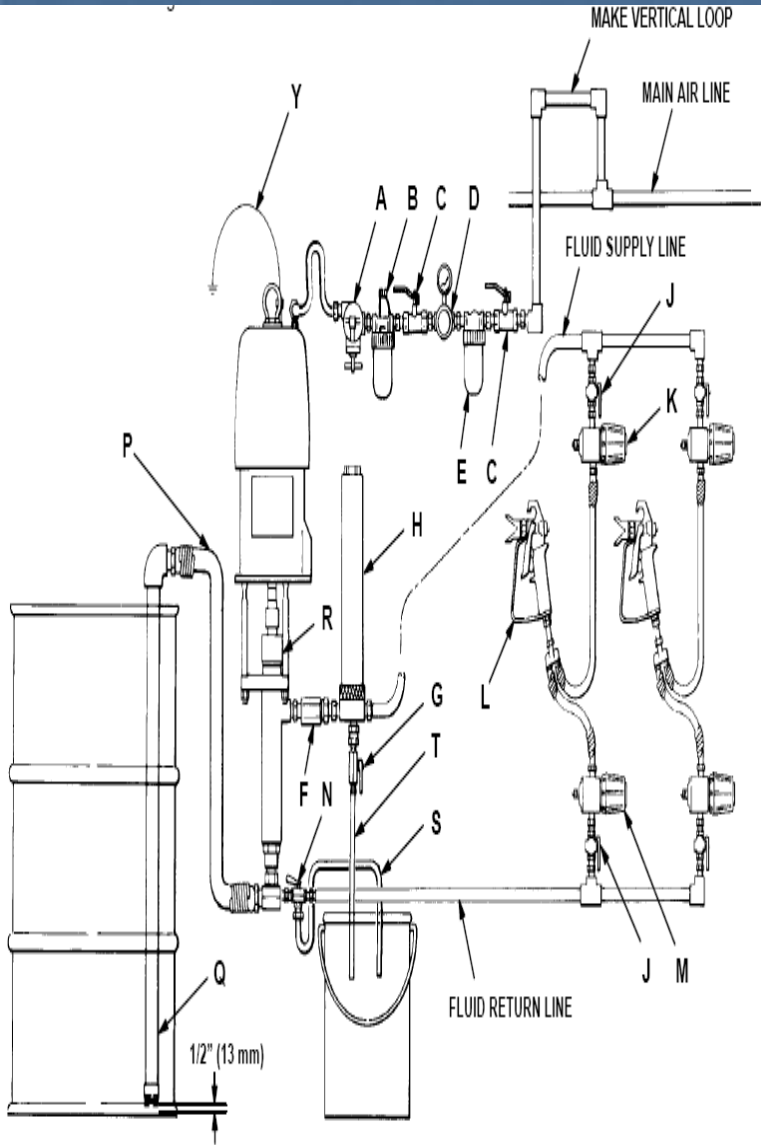
EM5™

Electronic Meter

PM5™

Pre-Set Electronic Meter



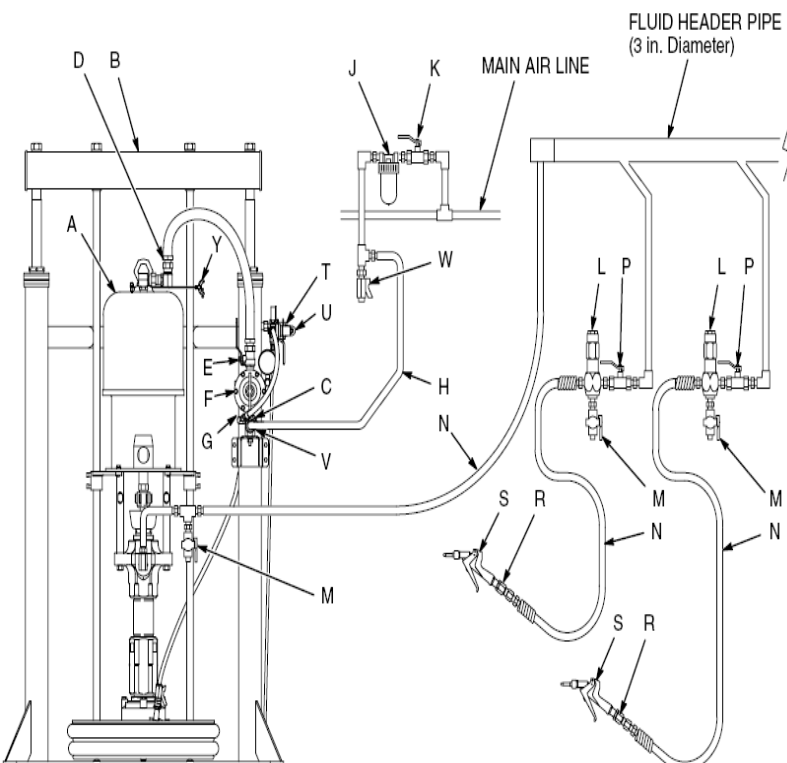


REF NO.	PART NO.	DESCRIPTION	QTY
1	100-103*	PIN, cotter; 0.12" (3.2 mm) x 1.5" (38 mm)	2
3	101-712	NUT, lock; w/nylon inserts; 5/8-11	3
4	101-936	NUT, hex, jam; 3/4-10	1
5	102-176	WRENCH, spanner	1
7	158-674*	SEAL, o-ring; buna-N	1
8	180-180	ELBOW, street, 1-1/2" npt(m) x 1" npt(f)	1
9	167-911	ROD, tie; 7" (178 mm), shoulder-to-shoulder	3
10	168-210	NUT, coupling	1
11	168-211	COUPLING	1
12	168-212	ROD, connecting	1
14	176-529**	LABEL, warning (not shown)	1
16	237-001	BULLDOG AIR MOTOR, reduced icing, quiet	1
17	217-530	DISPLACEMENT PUMP ASSY	1

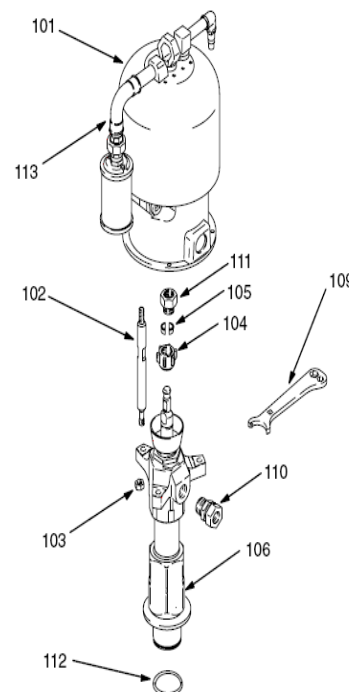
* Recommended "tool box" spare parts. Keep on hand to reduce downtime.

** Extra warning tags and labels available at no extra charge.

306 and 307 numbers in descriptions refer to separate instruction manuals, supplied.



Part No. 198475 Pump, Series A, 65:1 Ratio, with Quiet King Air Motor



Ref. No.	Part No.	Description	Qty.
101	235525	AIR MOTOR, Quiet King	1
		See 309348 for parts	
102	198476	ROD, tie; 271 mm (10.67") shoulder to shoulder	3
103	106166	NUT, hex; M16 x 2.0	3
104	186925	NUT, coupling	1
105	184129	COLLAR, coupling	2
106	198469	PUMP, displacement	1
		See page 34 for parts	
109	112887	WRENCH, spanner	1
110	198465	FITTING, 1" npt	1
111	198477	ADAPTER	1
112	109482	PACKING, o-ring, fluorocelastomer	1
113	198478	KIT, accessory, intake and exhaust	1



產品說明

型號: HFR-400 高壓塗料調整器

技術手冊

塗料入口尺寸	3/8" (psi f)
塗料出口尺寸	3/8" (psi f)
調整範圍	0 ~ 350bar
最高塗料耐壓	400bar
最大通過流量	15 lpm
接液材質	304sst Teflon
耐溫範圍	4.4 - 100 °C
外觀尺寸 (mm)	ø62 x H175
淨重	1950g



CTP-7M-30:1 (107-032)

ACCESSORIES (附件):



噴漆槍
A500 (350-001)
AIRLESS GUN



自動噴槍 (207-614)
AUTOMATIC GUN



3/8" 高壓穩壓器 (274-020)
FLUID HIGH PRESSURE REGULATOR



AIRLESS POLE GUN



3/8" 高壓蓄壓過濾器 (290-020)
3/4" 高壓蓄壓過濾器 (290-060)
HIGH PRESSURE FILTER

適用:

一般塗料、PVC、PU、水性、中高粘度塗料的中大量噴塗，及塗料中央循環供漆系統，氣動式安全性高、損耗少使用壽命長。

特點:

- 污染少
氣動高壓泵浦，塗料直接霧化，噴塗時無反彈，作業環境改善。
- 噴塗速度快
無氣式噴槍，噴塗速度較一般噴槍快3-10倍。
- 節省塗料、人工
附著率達80%，大量節省塗料操作時間縮短節省人工。

APPLICATION:

General PVC, PU, water-based, medium and high viscosity coatings; suitable for medium and high volume spraying; high safety, low waste, long life.

FEATURES:

- LOW POLLUTION:
Air powered high pressure pump; the coating is directly aerated; no reacting when spraying the paint; the operating environment is improved.
- HIGH SPRAYING SPEED
Airless spraying gun; the speed is 3-10 times than that by ordinary spraying gun.
- SAVES PAINT AND LABOR:
The adhesion rate is 80%; save much paint and shorten the working hours and labor.

CTP-6M-30 : 1 (106-032)

Fluid pressure ratio: 30 : 1 (壓力比)
Delivery: 0 ~ 4 l/min (吐出量)
Maximum outlet pressure: 200 kg/cm²
Air motor effective diameter: 153 mmφ

Air motor stroke: 100 mm
Air motor speed: 0 ~ 60 cycles/min
Air inlet: 3/8" PT
Fluid outlet: 3/8" PT

CTP-7M-30 : 1 (107-032)

Fluid pressure ratio: 30 : 1 (壓力比)
Delivery: 0 ~ 9 l/min (吐出量)
Maximum outlet pressure: 200 kg/cm²
Air motor effective diameter: 178 mmφ

Air motor stroke: 120 mm
Air motor speed: 0 ~ 60 cycles/min
Air inlet: 1/2" PT
Fluid outlet: 3/4" PT

CTP-10M-45 : 1 (108-045)

Fluid pressure ratio: 45 : 1 (壓力比)
Delivery: 0 ~ 12 l/min (吐出量)
Maximum outlet pressure: 270 kg/cm²
Air motor effective diameter: 254 mmφ

Air motor stroke: 120 mm
Air motor speed: 0 ~ 50 cycles/min
Air inlet: 3/4" PT
Fluid outlet: 1" PT

计量单位换算

重量换算 [风压的换算](#) [更多压力的换算](#)

公制		英美制常衡		英美制金衡或药衡		中国市制
公斤	克	磅		磅		两
1	1000	2.2046	35.2736	2.679	31.1507	20
0.001	1	0.0022	0.03527	0.00268	0.0321	0.02
0.4536	453.59	1	16	1.2135	14.5833	9.072
0.02835	28.35	0.0625	1	0.07595	0.9114	0.567
0.3732	373.24	0.82286	13.1657	1	12	7.465
0.0311	31.10	0.06857	1.0971	0.08333	1	0.622
0.05	50	0.1102	1.76368	0.13396	1.6075	1

宝石：1克拉=0.2克 1金衡=155.5克拉
容（体）积换算（一）

公制	中国市制	英制	美制
升	升	英加仑	美加仑
1	1	0.22	0.264
4.546	4.546	1	1.201
3.785	3.785	0.833	1

1000升=1立方米 1升=1000毫升=1000立方厘米 (C.C.)
英制1加仑=277.42立方英寸 英制1加仑=231立方英寸

容（体）积换算（一）

公制		英美制			中国市制
立方米	立方厘米	立方码	立方英尺	立方英寸	立方尺
1	1000000	1.303	35.3147	61024	27
0.000001	1	0.0000013	0.00004	0.06102	0.000027
0.7636	764555	1	27	46656	20.643
0.02832	28317	0.037	1	1728	0.7646
0.000016	16.317	0.00002	0.00058	1	0.00044
0.037	37037	0.0484	1.308	2260	1

木材体积单位换算

板（BOARD FOOT MEASURE,BFM）：指厚一英寸面积一平方英尺的木材

板材的换算：100板=2.36立方米

原木的换算：100板=5立方米（近似值）

功率换算表

1千瓦（KW）=1034英制马力（HP）1.36公制马力(HP)

1英制马力=0.746千瓦(KW)

1公制马力=0.735千瓦(KW)

1千伏安（K.V.A）=千瓦（K.W.）/0.80

粮谷重量容积换算

品名	1公吨折合蒲式耳	1蒲式耳折合	
		磅	公斤
小麦,大豆	36.743	60	27.216
玉米	39.368	56	25.402
大麦(英制)	44.092	50	22.68
大麦(美制)	45.931	48	21.773

1英制蒲式耳(-1.0321美制蒲式耳)合36.3677升

石(原)油重量,容积换算

国别	1公吨折合			
	千升	美制桶	英制加仑	美制加仑
美国,印度尼西亚	1.18	7.4	259.1	310.6
伊朗,沙特阿拉伯	1.19	7.49	261.8	314.5
日本	1.11	6.99	244.5	293.3
英国,科威特	1.16	7.31	255.8	306.7
委内瑞拉	1.09	6.84	239.2	287.4

注:世界平均比重的原油通常以1公吨=7.35桶(每桶为42美制加仑)或1174升计
常用度量衡英文名称和简写

名称	英文名称	简写	名称	英文名称	简写
克	gram	g.	码	yard	yd.
公斤	kilogram	kg.	英尺	foot	ft.
公担	quintal	q.	英寸	inch	in.
公吨	metric ton	m.t.	平方米	square metre	sq.m.
长吨	long ton	l.t.	平方英尺	square foot	sq.ft
短吨	short ton	sh.t.	平方码	square yard	sq.yd.
英担	hundredweight	cwt.	立方米	cubic metre	cu.m.
美担	hundredweight	cwt.	立方英尺	cubic metre	cu.ft.
磅	pound	lb.	升	litre	l.
(常衡)	ounce	oz.	毫升	millilitre	ml.
(金衡)	ounce	oz.t	加仑	gallon	gal.
司马担	picul		蒲式耳	bushel	bu.
米	metre	m.	克拉	carat	car.
公里	kilometre	km.	马力	horse power	h.p.
厘米	centimetre	cm.	千瓦	kilowatt	kw.
毫米	millimetre	mm.	公吨度	metric ton unit	m.t.u.

计量单位换算表
面（地）积换算

公制		英美制			
平方米	平方厘米	平方码	平方英尺	平方英寸	平方尺
1	10000	1.1960	10.7639	1550	9
0.0001	1	0.00012	0.00108	0.155	0.0009
0.8361	8361	1	9	1296	7.525
0.0929	929	0.1111	1	144	0.836
0.00065	6.45	0.00077	0.00694	1	0.0058
0.111	1111	0.133	1.196	172.2	1

长度换算

公制		中国市制	英美制		
米	厘米	尺	码	英尺	英寸
1	100	3	1.094	3.2808	39.37
0.01	1	0.03	0.01094	0.03281	0.3937
0.3333	33.33	1	0.3646	1.094	13.123
0.9144	91.44	2.743	1	3	36
0.3048	30.48	0.9144	0.3334	1	12
0.0254	2.54	0.0762	0.0278	0.833	1

1米=100厘米=1000毫米

重量换算

公制	英制	美制	港制
公吨	长吨	短吨	司马担
1	0.9842	1.1023	16.535
1.016	1	1.12	16.8
0.9072	0.8929	1	15
0.05	0.04921	0.0551	0.8267
0.0508	0.05	0.056	0.8402
0.0605	0.0594	0.0667	1

公制	中国市制	英美制
公斤	斤	磅
1000	2000	2204.6
1016	2032	2242
907	1814	2000
50	100	110.23
50.8	101.6	112
60.48	120.96	133.33
1	2	2.2046
0.5	1	1.1023
0.4536	0.9072	1

港制1司马担=100司马斤 公制1公吨=10公担 英制1长吨=20英担 (CWT)
 1英担=50.8024公斤 美制1短吨=20短担 (CWT) 1短吨=100磅=45.36公斤 [其它](#)

UNI/优恩爱

从低压到高压泵，有气和无气到混气枪（手动到自动），粉末到油漆喷涂；油脂插桶泵到标准200升油脂压盘/自动式；建筑内墙/外墙的电动隔膜/柱塞泵等产品都含盖。欢迎选购优恩爱(UNI)公司产品。

自1948年以来，优恩爱(UNI)开始生产制造喷漆设备，输送泵和挤压泵的零部件。对原材料的选择和 对每一个部件严格的质量检验，和100多个欧洲或美国等地境内工厂合作，提供半成品部件和配件。使得国际上许多知名品牌的 产品完全符合非常严格的 欧洲著名机构制定的标准，如：德国的V.D.E 和瑞士的A.S.E (我公司也有UNI-EN-ISO 9001质量证书)。因此，优恩爱(UNI)公司的设备和装置是该领域所能提供的产品部件质量最高，产品和服务最佳的典范。

通过持续稳定的发展优恩爱(UNI)公司形成了今天欧美等地的这种国内和国外销售 及售后服务的经营机制。

在产品开发过程中，优恩爱(UNI)公司还充分调动其资深技术人员的力量 在设备和应用方面获取了 非常重要的专门技术及知识技能。并加强和广泛的配套厂家及销售客户的关系。

我们认为有必要强调优恩爱(UNI)公司产品的优越性：精确度高，可靠性强，持久耐用，并十分重视对工作环境的保护和人身健康的重视。

UNI/优恩爱



漆料过滤器 高压流量调节器 高压回流调节器 管路式漆料过滤器
 Ref. 7030 Ref. 7000 Ref. 95225
 for NOVA 60:1 Ref. 95200 for
 NOVA 45:1



过滤器/调压阀



高压精密过滤器，安装在喷涂系统的压力管路上，用以滤除液体涂料中混入的杂质和液体本身化学变化所产生的胶质等，除去液体/涂料杂质，使喷出的涂料/油漆等液体介质符合使用要求，从而防止阀芯卡死、节流小孔缝隙和阻尼孔的堵塞以及系统元件过快磨损等故障的发生。对系统设备提供优质的保障。以保证系统的设备正常运行。该过滤器过滤效果好，精度高。



调压阀的作用是根据进液管内的压力变化，给予喷枪嘴适当的调减压力，达到满足喷枪压力的使用，有效的保护喷枪，使喷出液体/涂料更符合使用效果
有用于浓稠液体/涂料介质调压阀。

最大压力调节	210 bar (3050 psi)
高压压力调节 标准压力调节	70-210 bar (1000-3050 psi) 0 – 70 bar (0-1000 psi)
最大流量调节	14 l/min (3.5 gpm)
进口接口尺寸	3/8" npt
出口接口尺寸	1/4" npt

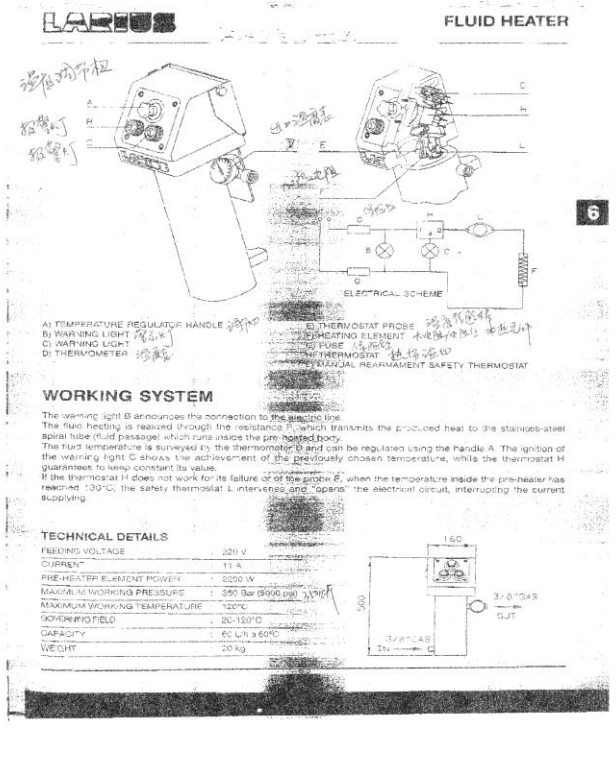
防爆加热器



输入电压:	220V
电流:	11A
加热元件功率:	2500W
最大工作压力:	350巴
最大工作温度:	120°C
温度设定范围:	20-120°C
输出量:	60升/小时 60°C时
重量:	20 公斤

Art. 6099: PRERISCALDATORE

UNI(优恩爱)预加热器是一个具有电子功能的防爆耐火设备,装在高压无气和空气喷涂系统中使用,他自身结构按照防爆产品的安全标准,经过CESI验证(核准等级 EEX “D” IICT4),加热器中涂料经过的通路为不锈钢材料,使用任何类型的涂料不会生锈. 加热器械上部位为电子控制装置,可根据需要方便快捷设定工作参数



需要更多支持请联系: 021-6676 3512, 6676 3513, www.toming.net

加热循环无气喷涂的优点

1) 一次成膜厚度增加

通过加热“稀释”油漆，可有效降低油漆粘度，因而可以喷涂固含量高的油漆，有效提高一次成膜厚度(见图1)，并达到更高的上漆率而不产生流挂。

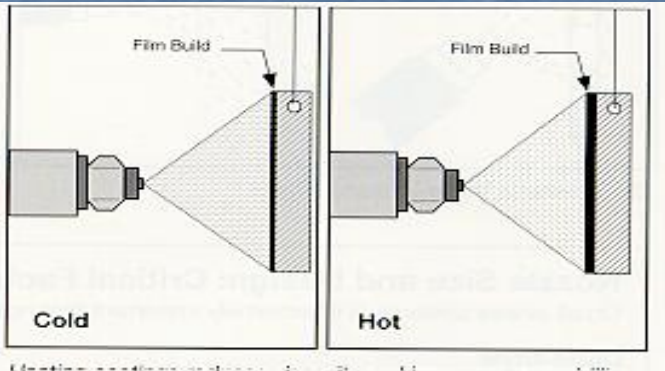


图1 传统无气喷涂与加热循环喷涂的膜厚

2) 干燥流平时间缩短。油漆温度升高，可加速溶剂的挥发，从而缩短干燥流平时间。(注：加热的油漆是不回到油漆桶中的，从而可避免因加热而造成的溶剂挥发)。

3) 涂层质量稳定,不受四季和昼夜温度变化的影响

循环的枪和阀保证油漆在系统内恒定的循环，因而可一直保证合适的油漆温度和粘度，油漆的雾化效果不变，涂层质量也就稳定不变。

4) 减少油漆过喷，避免油漆反弹造成的串色(准确切边)，同时提高上漆率，节约油漆的加热，降低了油漆粘度，所需的雾化压力就可降低，从而产生“更柔和”、更易于控制的喷涂，有效减少油漆过喷和反弹“漆雾”(见图2)，因此提高上漆率(增加25%至50%)。见图2

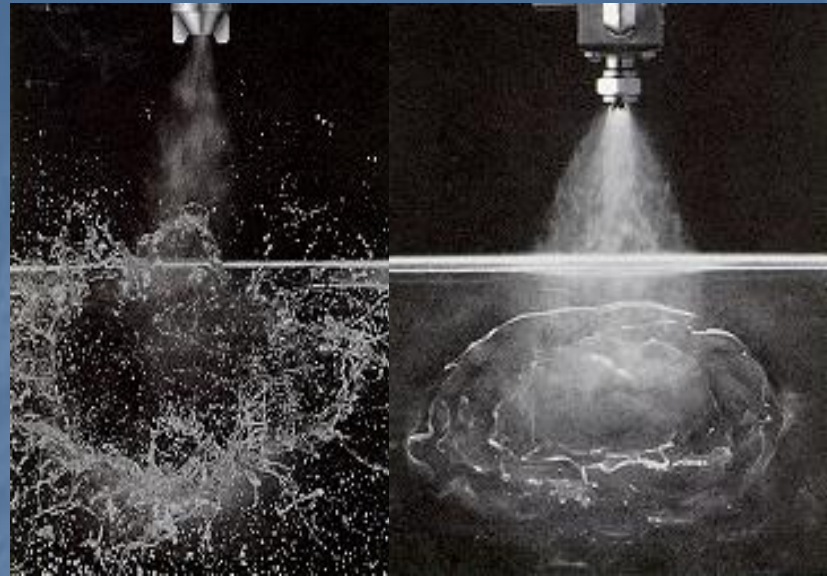


图2 传统无气喷涂与加热循环喷涂的效果

传统空气喷涂产生过喷无气喷涂系统采用高压雾化油漆。空气压力将涂料粒子以高速喷向工件，而实质上只有小部分留在工件表面，其余大部分都浪费了。除了过喷，混合了涂料粒子的高速气流反弹产生了“漆雾”，形成了空气垫，使涂料粒子无法喷到凹角和深腔。涂料的粘度越大，则需要的雾化空气压力就越大。然而，雾化空气压力越大，过喷和反弹就越大，喷涂效率就越低。传统空气喷涂的局限性

- 过多的过喷和反弹，上漆率极低
- 需要在涂料中加入高质量的溶剂以将涂料粘度降低到可喷涂的水平
- 生产效率低下，因为在许多情况下，空气喷涂需要二层以上的涂层才能达到设定的膜厚
- 空气喷枪的出漆量小，生产速度低
- 由于过喷油漆多，喷漆房的维护保养费用高

中/高压 柱塞泵



Ve-系列 泵是UNI 公司无气-无雾喷漆泵中最小的一种. 它是为那些没有大量压缩空气, 无需高流量输送泵的工作条件而设计的喷漆装置. Vega 泵气体消耗量低但能保证无气-无雾喷漆的质量. 它有三种比例: 5:1 用于低压喷漆, 15:1 用于无雾喷漆, 23:1 则用于无气-无雾喷漆. 泵体可安装在有轮小车上, 铁桶或墙壁上. 也可提供不锈钢体泵

Gh-系列泵有一个4" 空气马达, 适用于中等负荷和工业领域常态生产材料. 由于对 Gh-系列泵部件材料和加工程序的选择恰当, 它能保证非常强的可靠性及高生产效率. 它可同时输送两个喷枪所需的漆料. 该泵有两种不同的比例, 30:1 和 40:1 以满足各种喷漆应用的需求. 它可安装在有轮小车上或墙壁上. 30:1 的泵体也可用不锈钢材料制造并带有较大的液体入口处支架.

技术数据	VE-pump	GH-pump
空气输入压力	3/8 巴	
最大液体压力	比例 5:1 40 巴 比例 15:1 120 巴 比例 23:1 185 巴	比例 30:1 260 巴 比例 40:1 325 巴
最大液体输送量	比例 5:1 10 立升/分 比例 15:1 4 立升/分 比例 23:1 3 立升/分	比例 30:1 4 l/min 比例 40:1 3 l/min



OM-系列 是一种高性能喷漆泵, 它的液体输送量大并能使较浓厚产品雾化. 7 英寸电机可提供高达每分钟14立升的液体输送量, 能同时满足几支工作喷枪所需的涂料. 泵的部件用很坚固耐用的材料和非常精确的技术设计制造, 能保证高质量标准和较长的工作寿命. 泵有两种比例: 23:1 和 30:1. 均可安装在有轮小车上. 也可提供不锈钢体泵.

VA-系列 是一种高性能喷漆泵, 它结合了液体输送量大 (高达每分钟14立升) 和高压这两个特点, 以便能够雾化浓厚产品 如, 沥青, 防锈剂和膨胀材料等.

VA-系列 泵为极苛刻的工作环境所设计, 如: 造船厂, 炼钢厂和类似的重工业生产环境. 在这种条件下, 人们需要牢固可靠的生产设备和器具. VA-系列产品 可同时给几只喷枪供料并可在寒冷的环境下照常工作. 该泵有三种不同的比例 45:1, 60:1 和 68:1, 既可安装在有轮小车上也可置于墙壁上. 也可提供不锈钢体泵.

技术数据	OM-pump	VA-pump
空气输入压力	3/7 巴	
最大液体压力	比例 23:1 135 巴 比例 30:1 180 巴 比例 34:1 204 巴	比例 45:1 285 巴 比例 60:1 360 巴 比例 68:1 408 巴
最大液体输送量	比例 23:1 14 立升/分 比例 30:1 12 立升/分 比例 34:1 11 立升/分	比例 45:1 14 立升/分 比例 60:1 12 立升/分 比例 68:1 11 立升/分

高压管/接头



TS/TB Series Smooth Chemfluor® PTFE Fluoropolymer Smooth Inner Tube 304 Stainless Steel High Tensile Strength Braid

applications	common media	industry approvals & compliances
<ul style="list-style-type: none"> Sanitary transfer Steam transfer core Bottle filling Gas analysis Hydraulic lines Extrusion presses Molding/adhesive conveying 	<ul style="list-style-type: none"> Chemicals Steam Solvents Inks and dyes Paint Injectable materials Plastisols 	<ul style="list-style-type: none"> FDA approved per 21CFR177.1550 (TS only) US Pharmacopeia Class VI

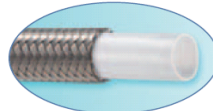
features & benefits

- Greater wall thickness of Chemfluor® PTFE tube - Up to 33% thicker than most competing products (tube wall .040 minimum)
- Superior kink resistance
- Improved vacuum ratings
- Better damage resistance
- Neutral to taste, color and odor
- Non-stick, non-contaminating
- Cleans easily — steam, detergent or caustic
- Can be autoclaved
- Full ID sizes
 - Greater flow rate per given size
 - Less pressure drop through fitting area than hoses with tube size ID

details

TS Series construction

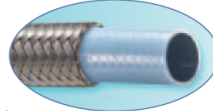
- Inner Tube: White Chemfluor® PTFE
- Reinforcement:
 - 304 stainless steel braid
 - 1-1/2" ID size double-braided for added kink resistance, higher pressure rating; working pressure based on minimum 4:1 safety factor; burst to suggested maximum working pressure



TS

TB Series construction

- Inner Tube: Black Chemfluor® PTFE
- Reinforcement:
 - Electrostatic dissipating conductive version of TS Series
 - 304 stainless steel braided
 - 1-1/2" ID size double-braided for added flexibility, higher pressure rating; working pressure based on minimum 4:1 safety factor; burst to suggested maximum working pressure



TB

engineering specifications

maximum length	minimum overall length of hose assemblies with anti-kink casing
1/8" 300'	1/4" 250'
1/4" 250'	3/8" 180'
3/8" 180'	1/2" 125'
1/2" 125'	3/4" 90'
3/4" 90'	1" 60'
1" 60'	1-1/2" 60'

TS/TB/TD/TDB Series hose specifications

Part Number	Inside Diameter		Outside Diameter		Maximum Working Pressure		Minimum Burst Pressure		Minimum Bend Radius		Vacuum Hg @ 70°F		Weight	
	in.	mm	in.	mm	PSI	Mpa	PSI	Mpa	in.	mm	in.	mm	lb./ft.	kg./m.
2TS	1/8	3.2	1/4	6.1	1,000	20.69	15,000	103.43	1.50	38.1	29.9	75.95	0.05	0.07
4TS/TB	1/4	6.4	3/8	9.7	3,000	20.69	15,500	93.08	2.50	63.50	29.9	75.95	0.08	0.12
6TS/TB	3/8	9.5	1/2	12.7	2,500	17.24	10,000	68.95	3.50	88.90	29.9	75.95	0.12	0.18
8TS/TB	1/2	12.7	5/8	16.8	2,000	13.79	8,500	58.61	4.00	101.60	29.9	75.95	0.15	0.22
12TS/TB	3/4	19.1	7/8	22.4	1,200	8.27	4,800	33.10	7.50	190.50	29.9	75.95	0.22	0.33
16TS/TB	1	25.4	1-1/8	29.5	800	5.51	3,200	22.06	12.00	304.80	20.0	50.80	0.31	0.46
24TD/TDB	1-1/2	38.1	1-3/4	44.2	900	6.21	4,000	27.58	15.00	381.00	15.0	38.10	0.44	0.66

Important:

Burst pressure ratings at ambient 70°F (21°C). See applicable notes below on vacuum/pressure ratings at temperatures other than ambient.
Working Pressure is given @ 70°F. Decrease working pressure 1% for every 2°F above 350°F.
Vacuum Rating is given @ 30°F. Decrease vacuum rating 1% for every 2°F above 30°F. 1-1/2" size (TD/TDB) vacuum rating decreases when installed less than 2X min. bend radius.
Extended Service Life Tip All 3/4", 1" and 1-1/2" TS/TB/TD/TDB assemblies 3" and longer are strongly recommended to use full-length anti-kink casing (see Hose Cover Options section, pages 75-76) to help prevent potential leaking and/or liner vacuum collapse.



Irrorazione - Spraying - 喷射

REFITEX HI-PAINT

REFITEX HI-PAINT

Struttura

Tubo con anima interna in polietilene PA11 con rinforzo tessile alta tenacità intrecciato in uno o più strati e copertura in poliuretano.

Structure

Hose with internal layer in polyethylene PA11 with high tenacity textile reinforcement braided into one or more layers. Polyurethane coating.

构造

内层 PA11 聚乙烯管，外层聚氨酯，多层编织，外层聚氨酯。

Media pressione - Medium pressure

Diametro nominale / nominal diameter	Diametro interno / inside diameter	Diametro esterno / outside diameter	Pressione operativa / working pressure	Pressione scoppio / bursting pressure	Raggio curvatura / bending radius
in.	mm	mm	bar	bar	mm
3/16"	5	8,5	100	> 220	30
1/4"	6,4	11,7	100	> 220	40
5/16"	8	13,4	120	> 400	50
3/8"	9,7	15,5	120	> 400	60

Alta pressione - High pressure

Diametro nominale / nominal diameter	Diametro interno / inside diameter	Diametro esterno / outside diameter	Pressione operativa / working pressure	Pressione scoppio / bursting pressure	Raggio curvatura / bending radius
in.	mm	mm	bar	bar	mm
3/16"	5	9,5	200	> 600	30
1/4"	6,4	12,6	200	> 600	40
5/16"	8	14,5	160	> 640	50
3/8"	9,7	16,5	160	> 640	70



Features

- Temperature Range: -40°F to 212°F (-40°C to 100°C) or to 150°F (66°C), With Water-Based or Fire Resistant Fluids
- Long Life in Impulse Cycling and Flexing
- Designed for Permanent or Reusable Couplings

Applications

- General Hydraulic Systems
- Hydraulic Tools
- Mobile Equipment
- High Pressure Pneumatic Systems
- High Pressure Chemical Transfer

Construction

- Black Perforated Polyurethane Cover
- Braided Synthetic Fiber Reinforcement
- Nylon Core Tube

Part Number	Nominal I.D.	Maximum O.D.	Minimum Bend Radius	Recommended Working Pressure @ Safety Factor		Minimum Burst Pressure		Weight		Swage Die Part No.	Permanent Coupling Series*	Reusable Coupling Series*			
				4:1	3:1	psi	bar	lbs/ft	kg/100m						
3R80-03	3/16	4.8	51.5	13.1	1-1/2	38	5,000	460	20,000	1,379	7.7	11.5	H03	390H/790H	390J
3R80-04	1/4	6.4	62.5	15.9	2	51	5,000	460	20,000	1,379	11.8	17.6	H04	390H/790H	390J
3R80-06	3/8	9.5	76.5	19.4	2-1/2	64	4,000	368	16,000	1,103	14.8	22.0	H06	390H/790H	390J
3R80-08	1/2	12.7	89.2	22.7	4	102	3,500	322	14,000	965	19.0	28.3	H08	390H/790H	390J
3R80-12	3/4	19.1	113.8	28.9	6-1/2	165	2,250	207	9,000	620	25.6	38.1	H12	390H/790H	390J
3R80-16	1	25.4	146.8	37.3	10	254	2,000	184	8,000	552	38.5	57.3	H16	390H	390J

需要更多支持请联系: 021-6676 3512, 6676 3513, www.toming.net



9-275-03



Case Style	A	B	C
Height:	1.44" 36.8 mm	1.75" 44.5 mm	1.37" 34.8 mm
Width:	2.44" 62.0 mm	5.00" 127.0 mm	5.00" 127.0 mm
Depth:	2.30" 58.4 mm	2.30" 58.4 mm	2.25" 57.2 mm
Case Style	D	E	F
Height:	1.44" 36.8 mm	1.44" 36.8 mm	1.44" 36.8 mm
Width:	2.44" 62.0 mm	2.44" 62.0 mm	2.44" 62.0 mm
Depth:	1.09" 27.5 mm	0.80" 20.3 mm	0.80" 16.2 mm
Case Style	G	H	I
Max. Length:	3.50" 88.0 mm	3.80" 91.4 mm	Max. Length 3.80" 91.4 mm
Hex Nut Height:	1.13" 28.7 mm	1.13" 28.7 mm	Cylinder Dia. 1.00" 25.4 mm
Cylinder Dia.:	0.88" 22.4 mm	0.88" 22.4 mm	
Case Style	J	K	
			<i>In view of continuing product development, technical information is subject to change. Please contact your area sales office for the most up to date information.</i>
Max. Length:	3.00" 76.2 mm	Height: 0.52" 13.2 mm	
Hex Nut Height:	1.13" 28.7 mm	Diameter: 2.00" 50.8 mm	
Cylinder Dia.:	1.00" 25.4 mm		



胶针/模具



圆边内外模
round edge in-out mould



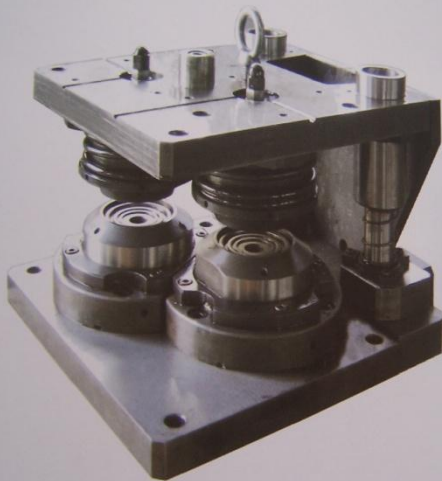
气雾罐顶、底盖冲模
Pressing Die For aerosol can cone



封罐滚轮
Seaming Roller



台湾、厦门双头冲模
Taiwan Xiamen double head pressing die



双头冲模
Double head pressing die



冲模上、下刀口及圆盘刀等
up and down of pressing die and round knife etc.



单头冲模
Single Head Pressing Die

齿轮泵/定量输送

用途说明:

T-CB系列齿轮油泵是一种容积式内啮合**齿轮泵**，其内齿轮为圆弧齿形，外齿轮为短幅外摆线的新型**齿轮泵**。该泵结构简单、噪声低、输油平稳、自吸性能好、工作可靠、使用寿命长。广泛使用于涂料定量输送；机床低压液压传动系统和大型机械设备中稀油站的供油和冷却系统以及各种机械设备的润滑系统等系统中。

性能参数:



型号	流量 L/min	压力 MPa	转速r/min	压力振 摆 Mpa	容积效率 %	电动功率 KW
CB-B4B	4	2.5	1450	0.15	80	0.37
CB-B10B	10	2.5	1450	0.15	80	0.75
CB-B16B	16	2.5	1450	0.15	90	1.1
CB-B20B	20	2.5	1450	0.15	90	1.1
CB-B25B	25	2.5	1450	0.15	90	1.5
CB-B32B	32	2.5	1450	0.15	90	2.2
CB-B40B	40	2.5	1450	0.15	94	2.2
CB-B50B	50	2.5	1450	0.25	94	3
CB-B63B	63	2.5	1450	0.25	94	4
CB-B80B	80	2.5	1450	0.25	95	5.5
CB-B100B	100	2.5	1450	0.25	95	5.5
CB-B125B	125	2.5	1450	0.25	95	7.5

海霸(HIBAR)精密计量泵

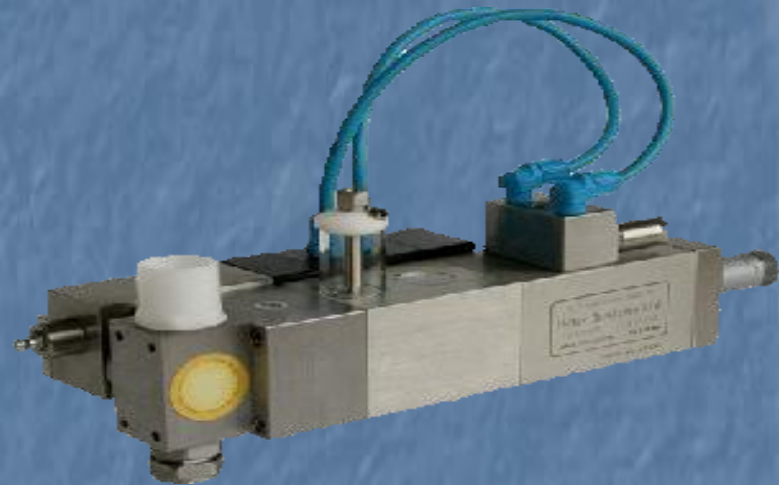
- 海霸(HIBAR)计量泵是一种高精密的定量注液泵，能将各种不同化学和物理性质的液体进行定量灌注或计量输送。
- 海霸泵是正向柱塞型泵，典型的结构分单向阀型泵和旋转阀型泵二种。单向阀泵应用于中低粘度的液体，粘度范围1-10,000CPS；旋转阀型应用于高中粘度或含固态颗粒的液体，粘度范围100-50,000CPS。
- 海霸泵独特而又紧凑的设计，能实现各种注液的功能和优异的性能：千分尺容量调整器，使之具有极高的计量精度和重复一致性；实际测量的精度高于所标称的正负千分之五，一些型号的泵可在1微升的注液量下仍达到非常高的精确度。独立的速度控制组件，能实现各种条件要求下的注液。
- 无磨损设计和坚固的结构，可使泵工作上数百万甚至二千万次以上而无需保养。

海霸(HIBAR)泵的典型工业应用：

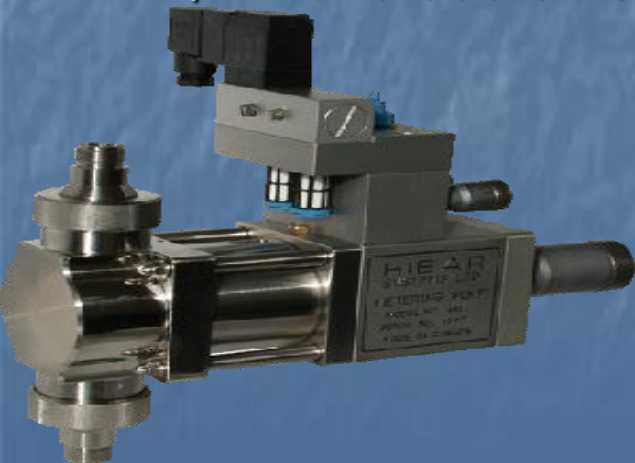
- 碱锰电池/电容器生产:用于将电解液和锌膏注入电池内等；
- 食品酱料/化妆品灌注封装:精密定量和每次灌注干净切断，保证了封装的量；
- 墨水等液体灌注:如打印机墨水盒，彩色笔，药品等生产工业。



1BC/2BC系列 单向阀型泵



1BR/2BR 旋转阀型泵



4H-CV系列 单向阀型泵



4H-RV 旋转阀型泵

代购服务

气缸/电磁阀元件、油缸/液压元件、传感器/电器、密封件、皮带/输送带等设备配件。并为客户提供相关产品资料。



需要更多支持请联系：021-6676 3512, 6676 3513, www.toming.net

■ 如需要更多支持请联系：



切里实业（上海）有限公司
Cherry Industrial (Shanghai) Co., Ltd

宝山区水产路 2399 号 802 室(泰富商业广场),
PC:201901

TEL: 021-6676 3512, 6676 3513,

FAX:021-6676 3519



QQ 1 : 1454 9901 34

QQ 2 : 7099 4804 1

QQ 3 : 2378 5876 0